



HOLLAND PARK AVENUE, HOLLAND PARK

£879,750

A quiet, brand new one bedroom apartment totalling 594 sq ft (55 sqm) in this luxurious high-specification development on Holland Park Avenue. Underfloor heating and comfort cooling in the living room and master bedroom ensure an optimum living environment all year round. Wiring is also provided for the addition of home communications, entertainment and security. This exquisite development enjoys both a prime location in the heart of the city, as well as a tranquil exclusivity renowned with this neighbourhood. This enclave of west London combines elegant leafy streets and squares with the beautiful 54 acre Holland Park. As with most central London apartments, the location enjoys excellent transport connections with numerous mainline and underground stations within the vicinity. These include Holland Park (Central Line), Kensington Olympia (Mainline and District Line) and Shepherds Bush (Mainline and Central Line), which is located only 100 - 150 metres to the West of the property.



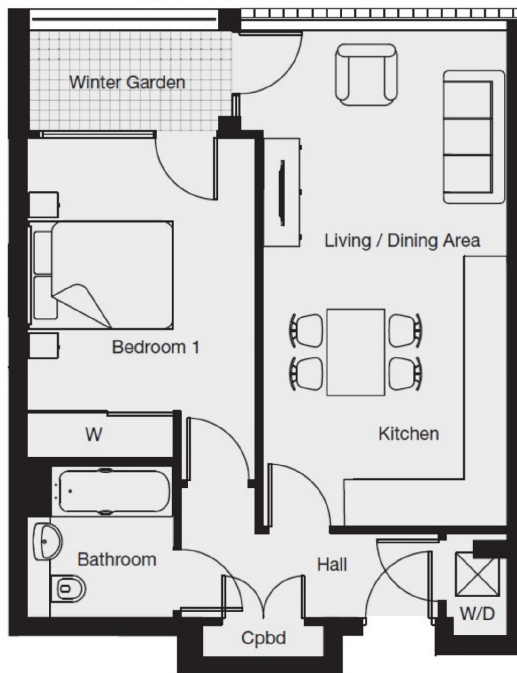


PRIME LONDON
SALES · LETTINGS · ACQUISITIONS · ASSET MANAGEMENT
NEW HOMES AND INVESTMENTS





**205 HOLLAND PARK AVENUE
SECOND FLOOR**



LIVING / KITCHEN AREA	6.80m x 3.40m	22' 4" x 11' 2"
BEDROOM	3.70m x 3.10m	12' 2" x 10' 2"
TOTAL AREA	51.27m ²	551.8ft ²
WINTER GARDEN	3.92m ²	42.1ft ²

