



FLADGATE HOUSE, BATTERSEA POWER

£660,000



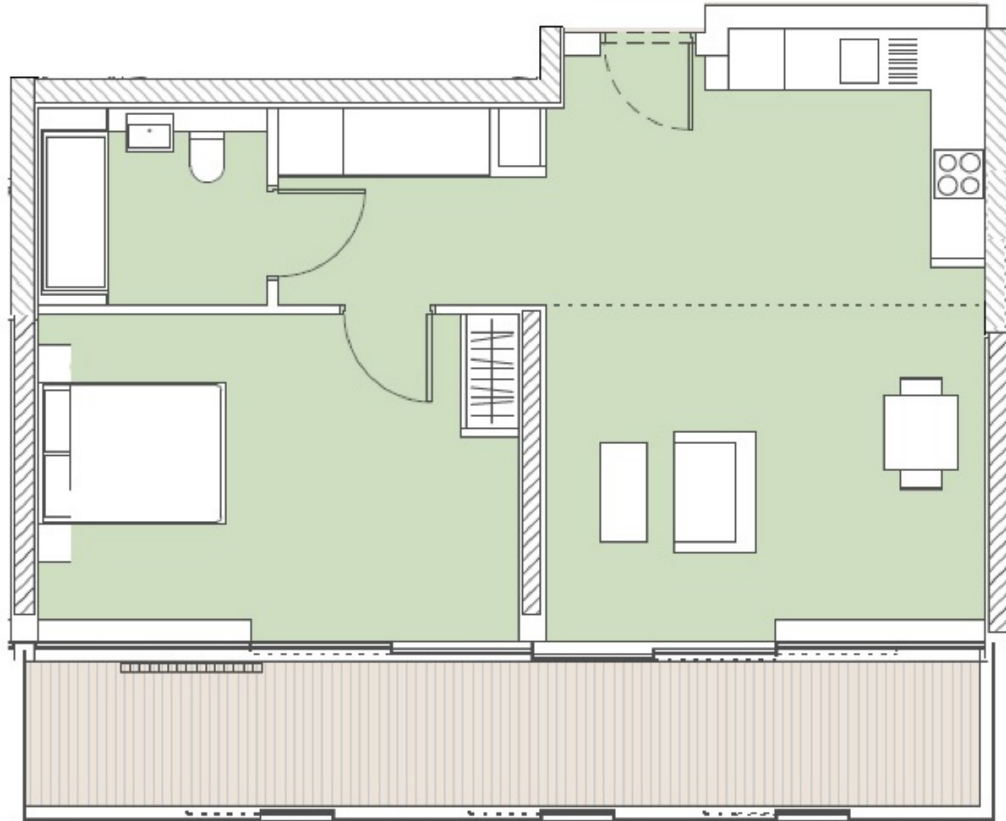
An extremely sizeable apartment totalling 814 sq ft in Fladgate House, in the first phase of the Battersea Power Station development, due for completion in Q4 2016. Battersea Power station is part of a wider regeneration project which will transform the Battersea/Nine Elms area over the coming years. Future benefits will include an extension of the Northern Line and an extensive parkland stretching from the power station down to Vauxhall. Residents will benefit from a variety of cafes, bars and restaurants, plus a selection of high street shops and independent boutiques, whilst also being just across the river from the fashionable shopping districts and eateries of Chelsea.

Photographs are CGI images for representation only



FLADGATE HOUSE, BATTERSEA POWER STATION, SW8

SIXTH FLOOR



WINTER GARDEN

167.9 sq ft / 15.6 sq m

NET SALEABLE AREA

646.9 sq ft / 60.1 sq m

