



**THE CORNICHE, 20 ALBERT EMBANKMENT,
£859,950**



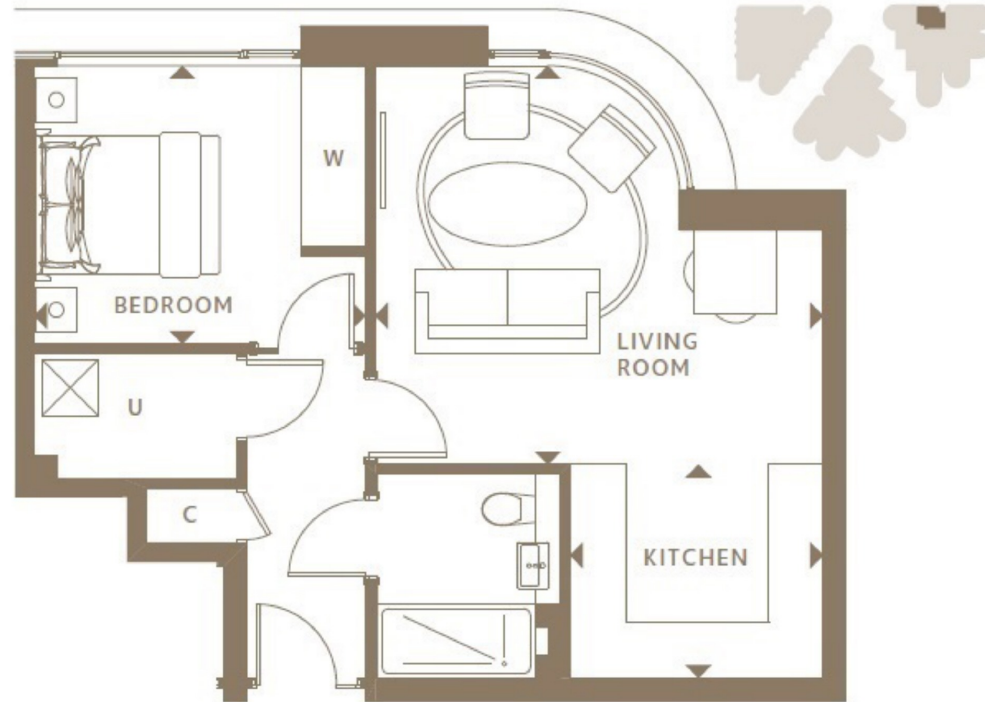
A twelfth floor one bedroom apartment totalling 526 sq ft, available for off-plan purchase in The Corniche, 20 Albert Embankment, for completion in 2017. Located in an enviable position on the bank of the River Thames, The Corniche (designed by Foster & Partners) captures some of London's most exquisite views, not only of the Houses of Parliament and the River Thames, but also the Tate Britain, London Eye and the City. The development includes extensive residents facilities including a restaurant, gym, spa, pool and cinema, and also commercial spaces such as restaurants and cafes focused around a well considered and inviting public space.





You may download, store and use the material for your own personal use and research. You may not republish, retransmit, redistribute or otherwise make the material available to any party or make the same available on any website, online service or bulletin board of your own or of any other party or make the same available in hard copy or in any other media without the website owner's express prior written consent. The website owner's copyright must remain on all reproductions of material taken from this website.

THE CORNICHE, 20 ALBERT EMBANKMENT
TWELFTH FLOOR



Living Room	4.83 x 4.30m	15'1" x 14'1"
Kitchen	2.73 x 2.30m	9'0" x 7'7"
Bedroom	3.57 x 3.00m	11'9" x 9'10"
Total Internal Area	48.87 m²	526.0 ft²

