



RECEPTION EXAMPLE

**THE TOWER, CHELSEA CREEK**

**£930,000**



An extremely generous 770 sq ft apartment with parking in The Tower at Chelsea Creek, available as an off-plan investment purchase for completion in Spring/Summer 2016.

These high specification air-conditioned apartments include custom designed fitted kitchens, luxurious bathrooms and enviable living spaces designed to offer the highest level of comfort to the occupants.

Residents of this exceptional new development also have use of The Spa - the state of the art health and fitness centre in Chelsea Creek, with an indoor swimming pool, sauna, steam room, gymnasium and treatment room. Residents will also benefit from managed car parking, 24 hour concierge and an unrivalled selection of shops, bars, restaurants, leisure facilities and beautiful landscaping.







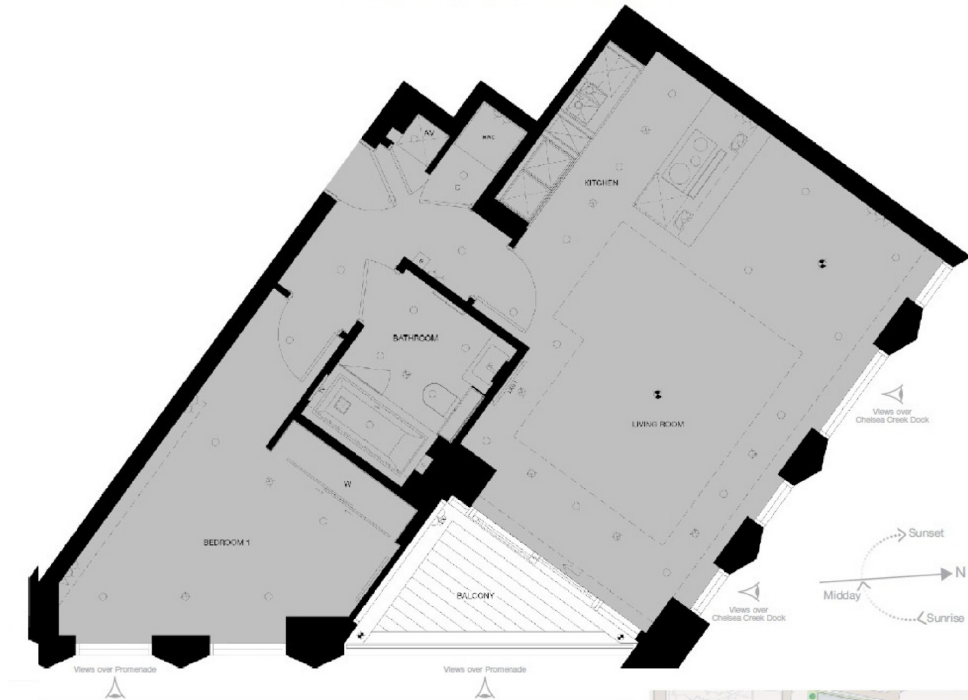




**THE TOWER, CHELSEA CREEK, LONDON SW6**

**GROSS INTERNAL AREA 770 SQ FT / 71.5 SQM**

**BALCONY 54 SQ FT / 5 SQM**



**FIRST FLOOR**

Kitchen	2.96m <sup>2</sup> x 3.42m	9'9" x 11'2"
Living Room	5.34m <sup>2</sup> x 7.40m	17'6" x 24'3"
Bedroom 1	3.95m <sup>2</sup> x 4.25m <sup>2</sup>	13'0" x 14'0"

