

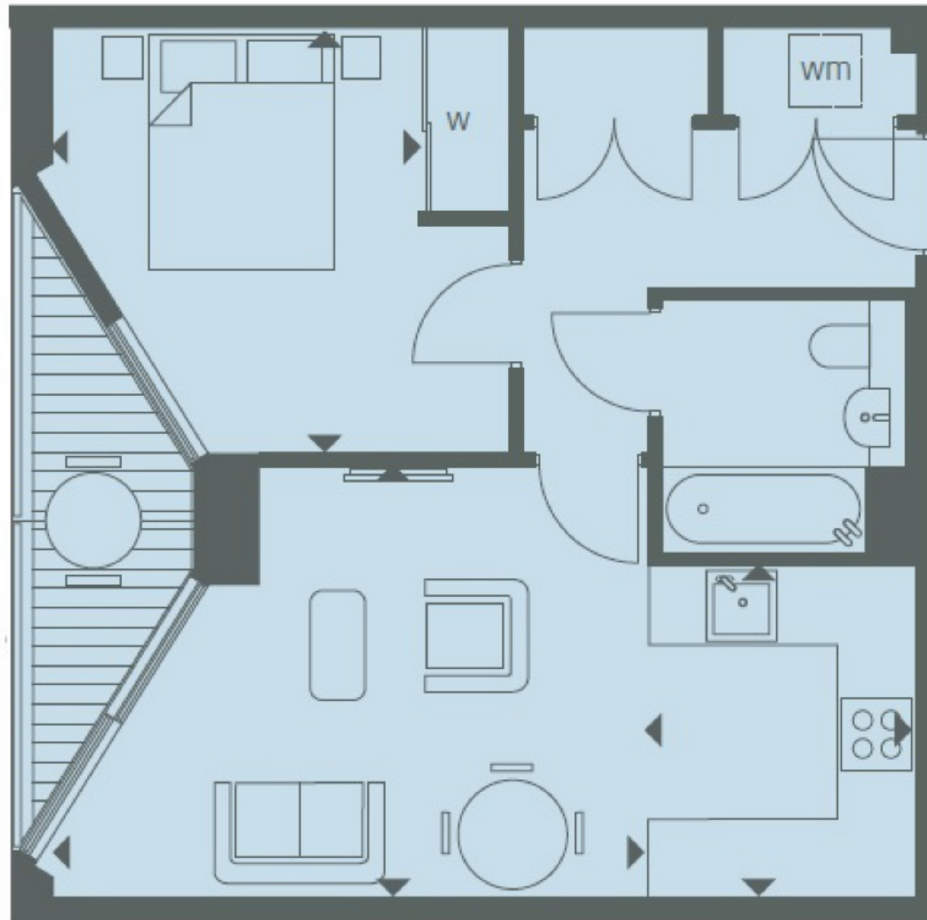


RIVERLIGHT THREE, NINE ELMS

£680,000



RIVERLIGHT THREE, NINE ELMS
FOURTH FLOOR



INTERNAL AREA M ² / SQ FT	46.62 / 502
EXTERNAL AREA M ² / SQ FT	4.84 / 52.1
Living / Dining	4.89m x 3.57m / 16'0" x 11'7"
Kitchen	2.75m x 2.21m / 9'0" x 7'3"
Bedroom 1	3.49m x 3.06m / 11'5" x 10'0"
Balcony	5.46m x 1.50m / 17'9" x 4'9"

