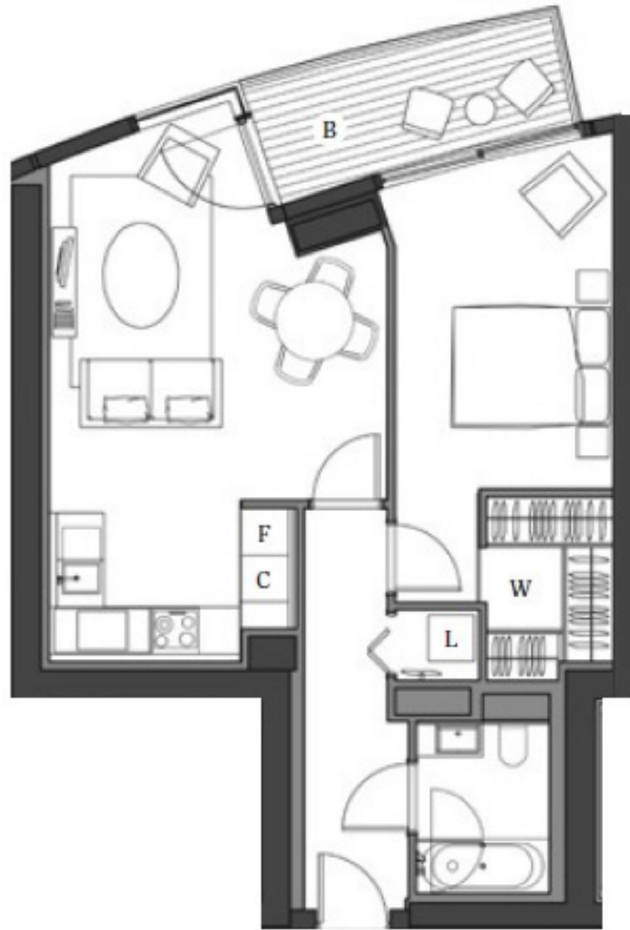




PROVIDENCE TOWER, CANARY WHARF

£527,500

PROVIDENCE TOWER, BISCAVNE AVENUE, LONDON E14
TENTH FLOOR



Total area
596.8sqft / 55.4sqm

Living / Kitchen
7160 x 4315mm

Bathroom
2200 x 1700mm

Bedroom
4555 x 2785mm

Balcony
68.9sqft / 6.4sqm

