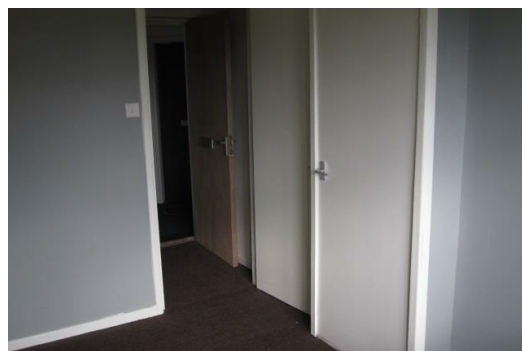




## Apartment 12, Denton House, Kingsdale Court, Leeds, LS14 1NE

BetterMove are pleased to present this lovely one bedroom flat in Leeds. The property has electric wall heaters and double glazing in the lounge. Parking is also available.



Entrance Hall 3'3" x 14'5" (1 x 4.4)

Reception 11'1" x 8'2" (3.4 x 2.5)

Kitchen 4'7" x 11'5" (1.4 x 3.5)

Bedroom One 8'10" x 10'2" (2.7 x 3.1)

Bathroom 6'2" x 5'6" (1.9 x 1.7)

