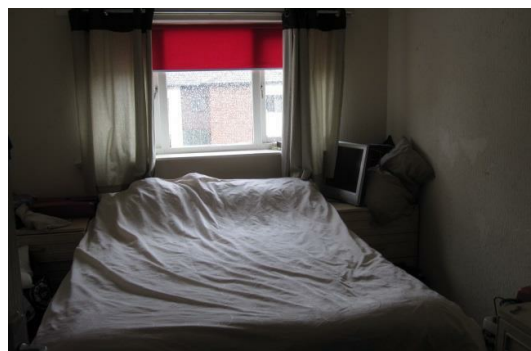




Apartment 10, Denton House, Kingsdale Court, Leeds, LS14 1NE

BetterMove are pleased to present this one bedroom flat in Leeds. This property would be suitable for both first time buyers and investors. Briefly comprising of reception, kitchen, a bedroom and bathroom. The property also features communal gardens and secure private parking

Kingsdale Court is situated in the North of Leeds and is within walking distance of Roundhay Park. It is also within close proximity of the A58 Wetherby Road in North East Leeds. Leeds City Centre is approximately six miles away from the property.




Reception 9'6 x 14 (2.90m x 4.27m)

Kitchen 6'6 x 9 (1.98m x 2.74m)

Bedroom One 10 x 12 (3.05m x 3.66m)

Bathroom 6 x 6'6 (1.83m x 1.98m)

Energy Efficiency Rating		
	Current	Potential
Very energy efficient - lower running costs		
(92 plus) A		
(81-91) B		
(69-80) C		
(55-68) D		
(39-54) E		
(21-38) F		
(1-20) G		
Not energy efficient - higher running costs		
	33	47
England & Wales	EU Directive 2002/91/EC 	

Environmental Impact (CO ₂) Rating		
	Current	Potential
Very environmentally friendly - lower CO ₂ emissions		
(92 plus) A		
(81-91) B		
(69-80) C		
(55-68) D		
(39-54) E		
(21-38) F		
(1-20) G		
Not environmentally friendly - higher CO ₂ emissions		
	16	24
England & Wales	EU Directive 2002/91/EC 