



**WESTBOURNE APARTMENTS, FULHAM**

**£675,000**



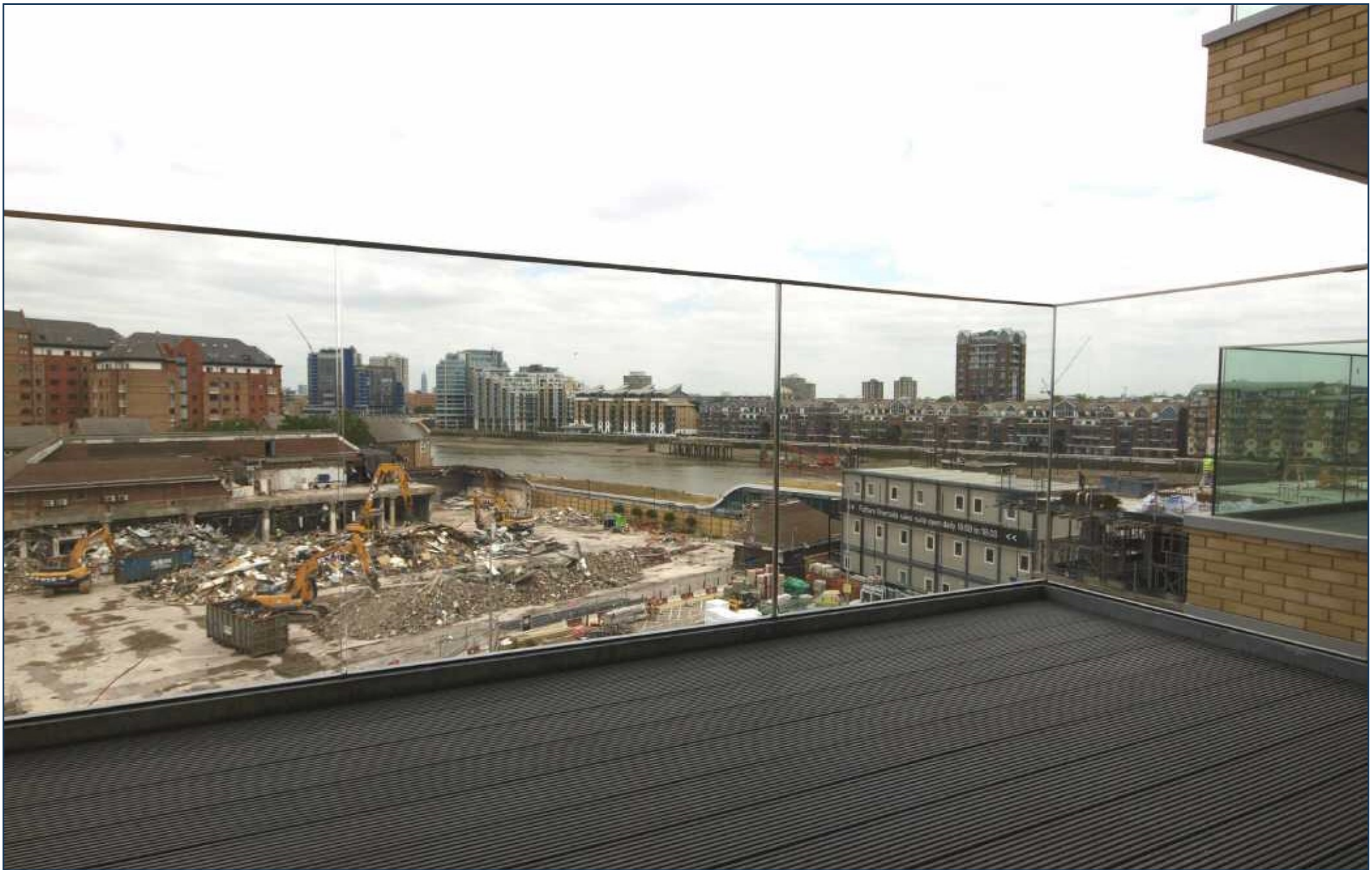
A brand new and excellently proportioned one bedroom apartment of 560 sq ft (52 sqm) within Fulham Riverside, offering excellent value for immediate occupation within this premium site. The property offers generous space, high specification fittings, comfort colling, a large balcony/terrace and plentiful storage.

In a prime position on one of London's few remaining stretches of undeveloped riverfront, Fulham Riverside includes landscaped piazzas, a proposed waterfront café, podium gardens, a concierge service and a fitness suite.

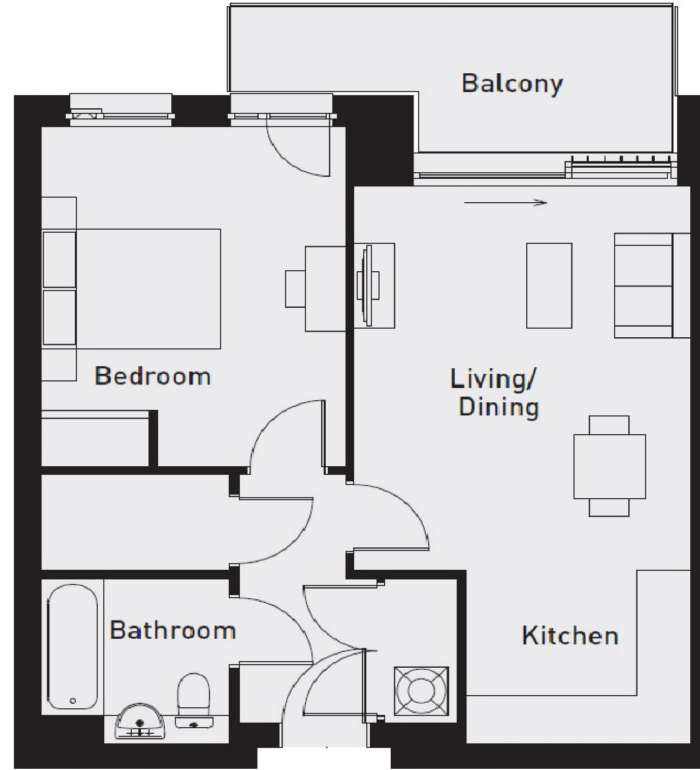
The development has been masterplanned by Lifschutz Davidson Sandilands, a multi-award winning firm of architects and urban designers whose vision calls for exemplary housing with generous open space and improved access to the river.

At the centre of Fulham Riverside you will find the beautiful podium gardens - a multi-layered open area facing the Thames. Channels of water flow towards the river around a central lawn forming a large pool, before cascading down an impressive three-metre waterfall.





**GARDEN EAST APARTMENTS, FULHAM RIVERSIDE  
FIFTH FLOOR**



Kitchen/Dining	2495 x 2136mm	8'2" x 7'0"
Living	3740 x 4881mm	12'3" x 16'0"
Bedroom	3385 x 4018mm	11'1" x 13'2"
Bathroom	2100 x 2018mm	6'11" x 6'7"
<b>Total area</b>	<b>52.0 sq m</b>	<b>559.9 sq ft</b>
Balcony	4910 x 1825mm	16'1" x 6'0"

