



DOMINION HOUSE, BARTS SQUARE, THE CITY

£850,000


PRIME LONDON

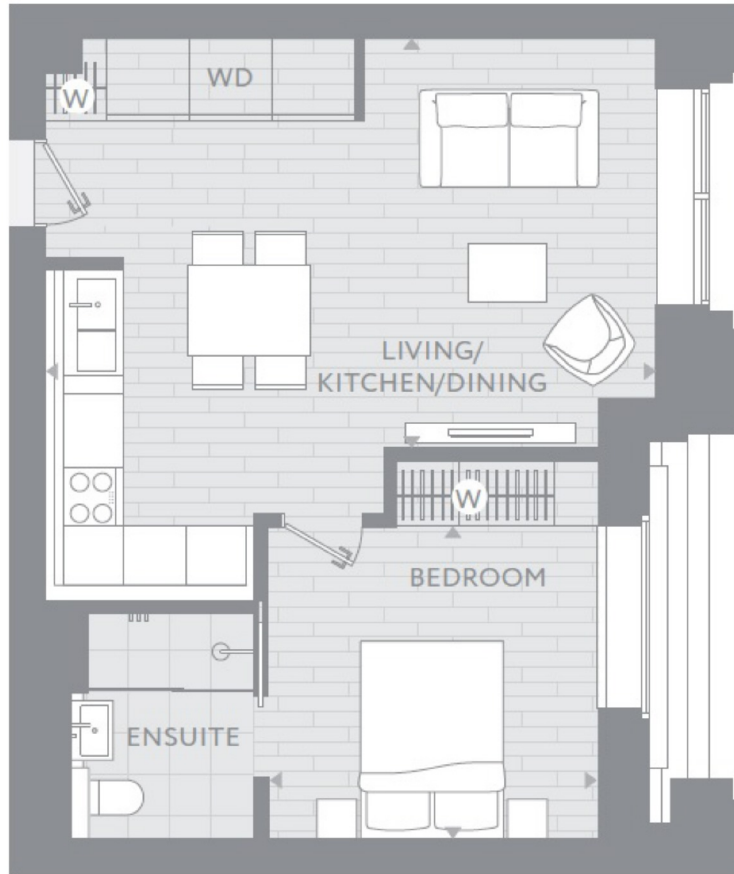
A quiet and excellently proportioned apartment within the exclusive Dominion House at Barts Square, available as an off-plan purchase for completion in mid-2017. The streetscape around Barts Square offers an inviting patchwork of brick, stone and glass, an authentic contemporary streetscape that begs to be explored and appreciated. This is the character at the heart of Dominion House, a building whose face on to Bartholomew Close is an intriguing mix of retained brick facades, arched windows and crisp contemporary architecture.

Calm, uncomplicated and open, Barts Square's apartments are tailored to maximise light, space and the orientation of their buildings. Finished in a mixture of refined materials and warm, organic textures, these spaces are dressed with raw oak floorboards, natural slate, marble and polished plaster. Understated and luxurious, the apartments include top of the range appliances and consolidated controls for heating, cooling and lighting. Storage and fittings are integrated into the fabric of the apartments throughout, allowing for long, clean contemporary lines. The result is residences with an elegant, design-orientated character all of their own.





**DOMINION HOUSE, BARTS SQUARE, LONDON EC1A
THIRD FLOOR**



Living/Kitchen/Dining	6.14m x 4.12m 20'1" x 13'6"
Bedroom	3.29m x 3.15m 10'9" x 10'4"
Total area	46.8 sq m / 504 sq ft

