



**AMBASSADOR BUILDING, EMBASSY GARDENS,
£775,000**



A very rare higher (eleventh) floor 564 sq ft south facing one bedroom apartment overlooking Linear Park, available as a brand new purchase in The Ambassador Building, Embassy Gardens.

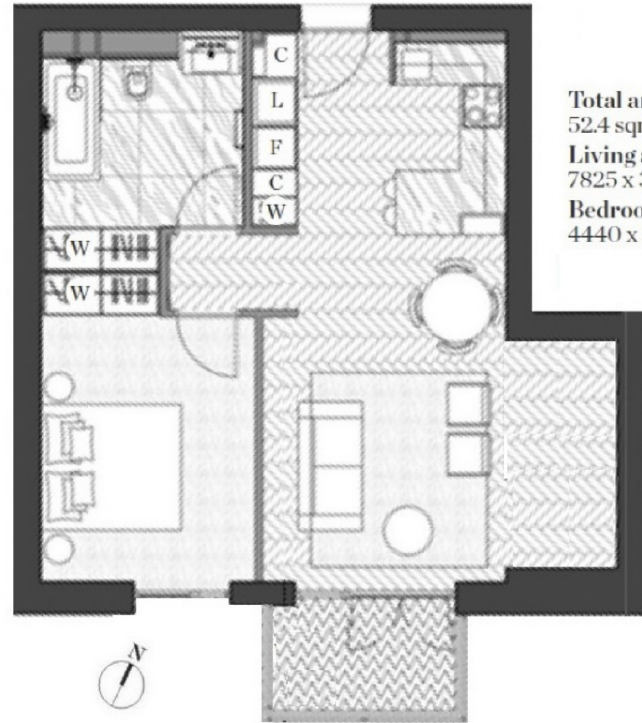
Designed to the highest specification, the apartment boasts high ceilings, walnut parquet flooring, private balcony, comfort cooling and abundant natural light reminiscent of a Manhattan loft apartment. Located on the banks of the Thames and near London's cultural South bank, residents not only enjoy a wealth of the Capital's finest attractions and amenities practically on their doorstep but also premium residents facilities including an exclusive private club and health spa.

Available chain free and to view immediately.





AMBASSADOR BUILDING, EMBASSY GARDENS, NINE ELMS, SW8
ELEVENTH FLOOR



Total area:
52.4 sqm / 564 sqft
Living area:
7825 x 3400 mm
Bedroom:
4440 x 3000 mm

