



**AMBASSADOR BUILDING, EMBASSY GARDENS,  
£525 PER WEEK**



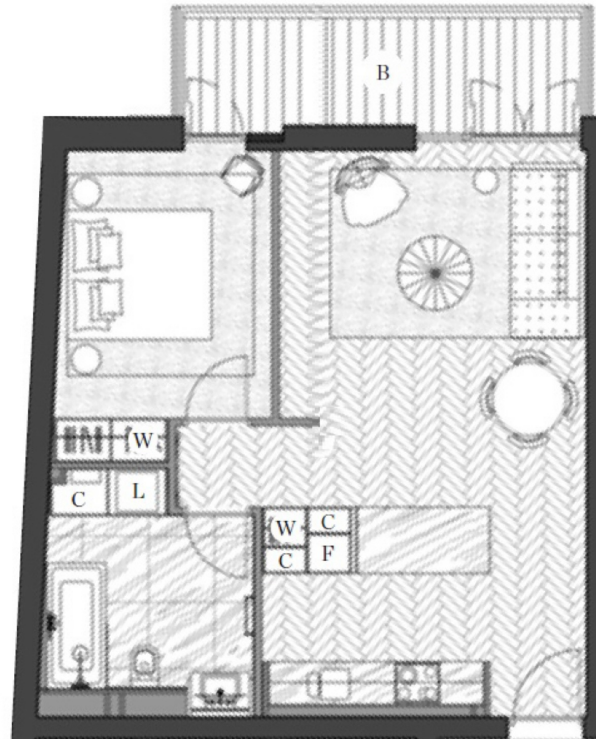
A brand new one bedroom apartment on the river side of Embassy Gardens totalling 607 sq ft, available for immediate long term lease on a furnished basis. Designed to the highest specification, the apartment boasts high ceilings, walnut parquet flooring, private balcony, comfort cooling and abundant natural light reminiscent of a Manhattan loft apartment. Located on the banks of the Thames and near London's cultural South bank, residents will not only enjoy a wealth of the Capital's finest attractions and amenities practically on their doorstep but also premium residents facilities including an exclusive private club and health spa, which is set to rival the best international hotels in the world.







AMBASSADOR BUILDING, EMBASSY GARDENS, SW8  
FOURTH FLOOR



**Total area:**  
56.4 sqm / 607 sqft  
**Living area:**  
7825 x 4415 mm  
**Bedroom:**  
4365 x 2890 mm  
**Balcony:**  
8.3 sqm

