



4 RIVERLIGHT QUAY, NINE ELMS
£650,000

A one bedroom third floor apartment, available as an investment off-plan sale for completion in early 2016. This apartment offers 522 sq ft of living space, sizeable balcony, high specification level throughout, comfort cooling and under floor heating.

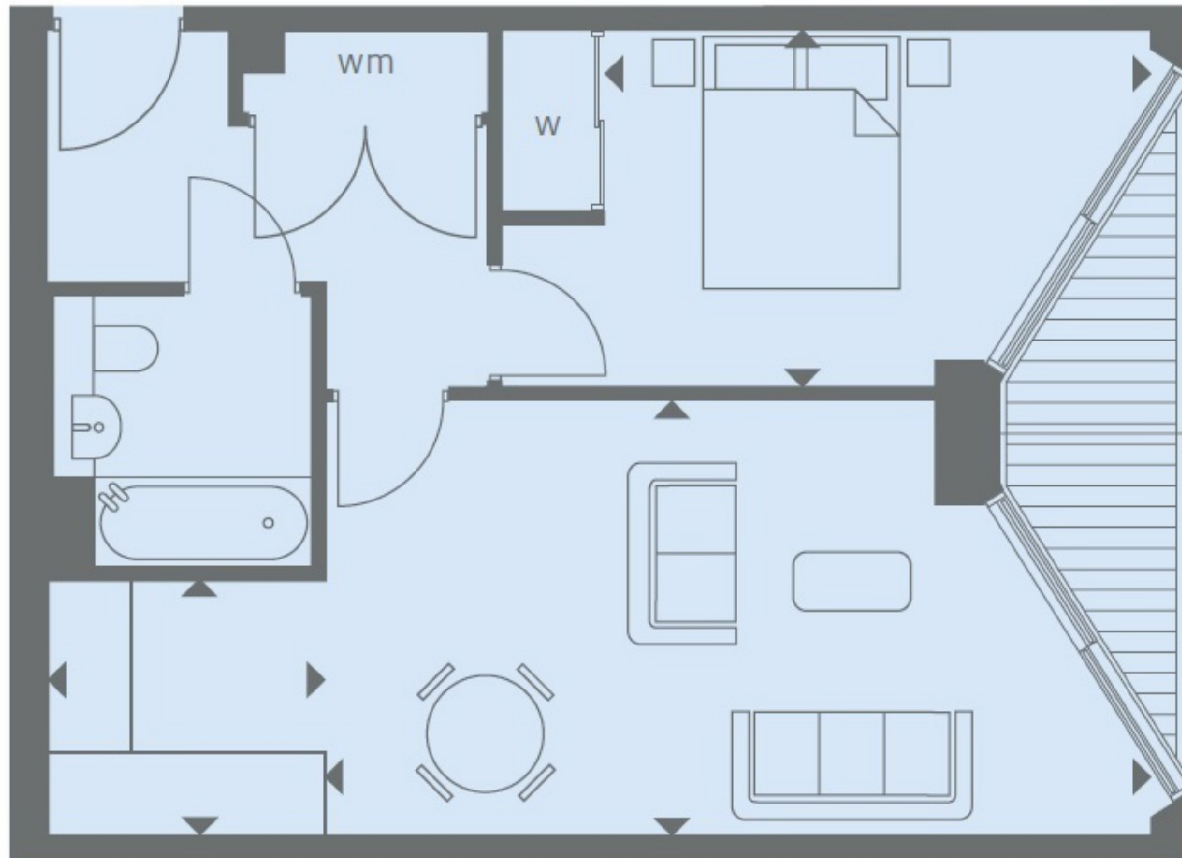
Created by world-renowned architects Rogers Stirk Harbour & Partners. Riverlight consists of six modern and elegant pavilions that have been specifically designed to maximise the sunlight within and optimise the views out. Over 75% of the development is dedicated to open space with the riverfront visible and accessible between each and every building. It offers a riverside walkway and park, private gardens and water features. An exclusive residents Clubhouse offers a unique third space between home and work which to socialise, exercise and be entertained, from a private screening room to virtual golf facilities; a residents club lounge and library and a 15m swimming pool, state-of-the-art gymnasium and spa.

Large double-height lobbies feature at the buildings entrance. These lead to smaller more personal floors, with no more than seven apartments per floor, accessed by





4 RIVERLIGHT QUAY, NINE ELMS, LONDON SW8 **THIRD FLOOR**



INTERNAL AREA M ² / SQ FT	48.48 / 521
EXTERNAL AREA M ² / SQ FT	4.84 / 52.1
Living / Dining	6.36m x 3.35m / 20'9" x 11'0"
Kitchen	2.14m x 1.96m / 7'0" x 6'4"
Bedroom 1	4.20m x 2.75m / 13'8" x 9'0"
Balcony 1	5.28m x 1.49m / 17'3" x 4'9"

