



**COLUMBUS HOUSE, ENDERBY WHARF,
£375,000**

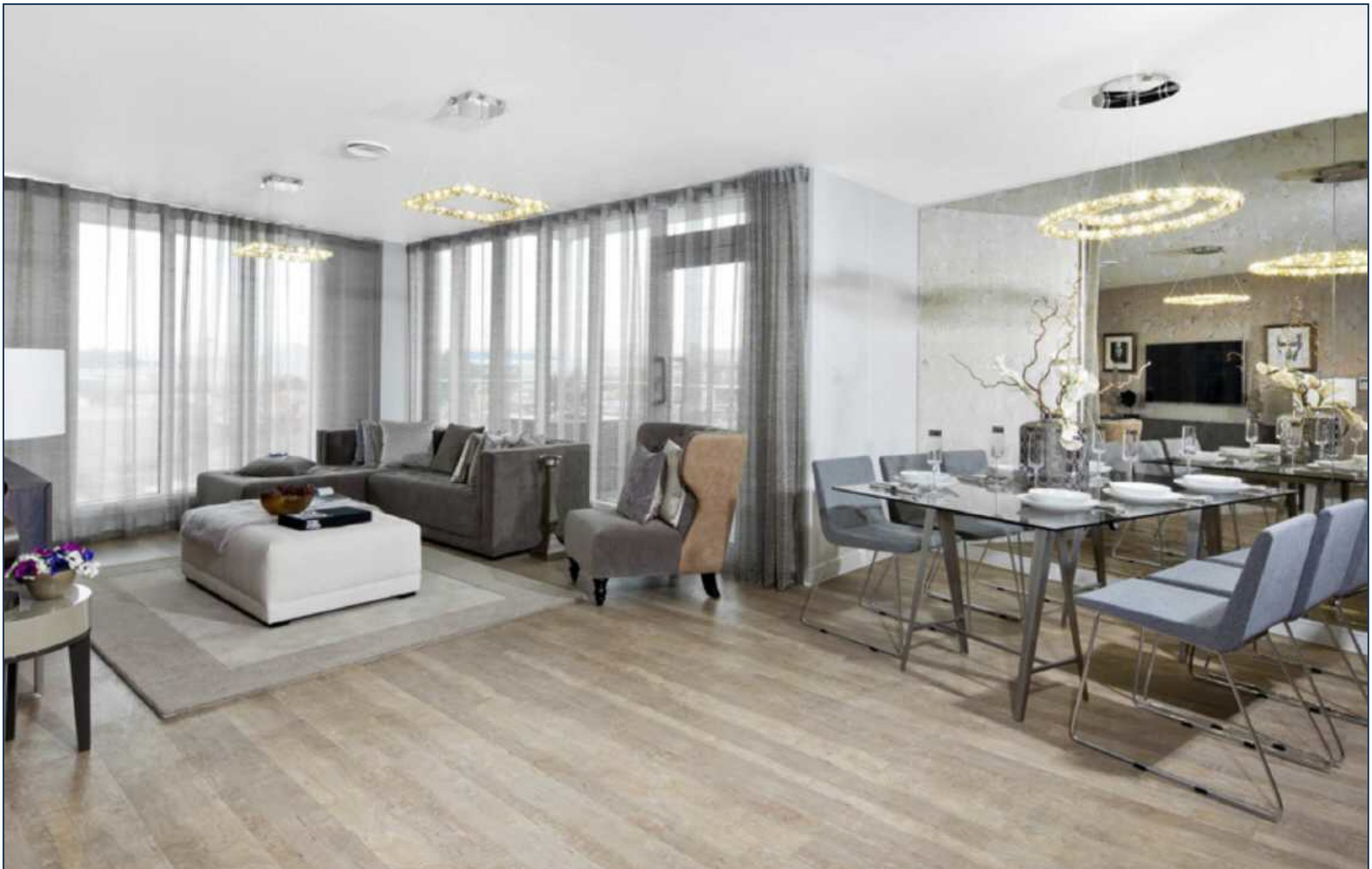
An extremely generous 564 sq ft second floor apartment in Columbus House at Enderby Wharf, with sizeable balcony, available for purchase for completion on Q2 2016. The property comes complete with a furniture package worth over £4500 and a legal fee contribution of £1000.

Enderby Wharf sits in a unrivalled position in Greenwich with west-facing views to the city and Canary Wharf and over 200 metres of river frontage. This well positioned apartment offers a spacious open plan kitchen/reception room with a large bedroom, finished to an impeccable standard. There is also a large private balcony offering substantial outdoor space. The owner will also benefit from the 5-year Barratt warranty on internal fixtures and fittings as well as the 10-year NHBC Buildings Insurance. The property is offered with the balance of a 999-year leasehold

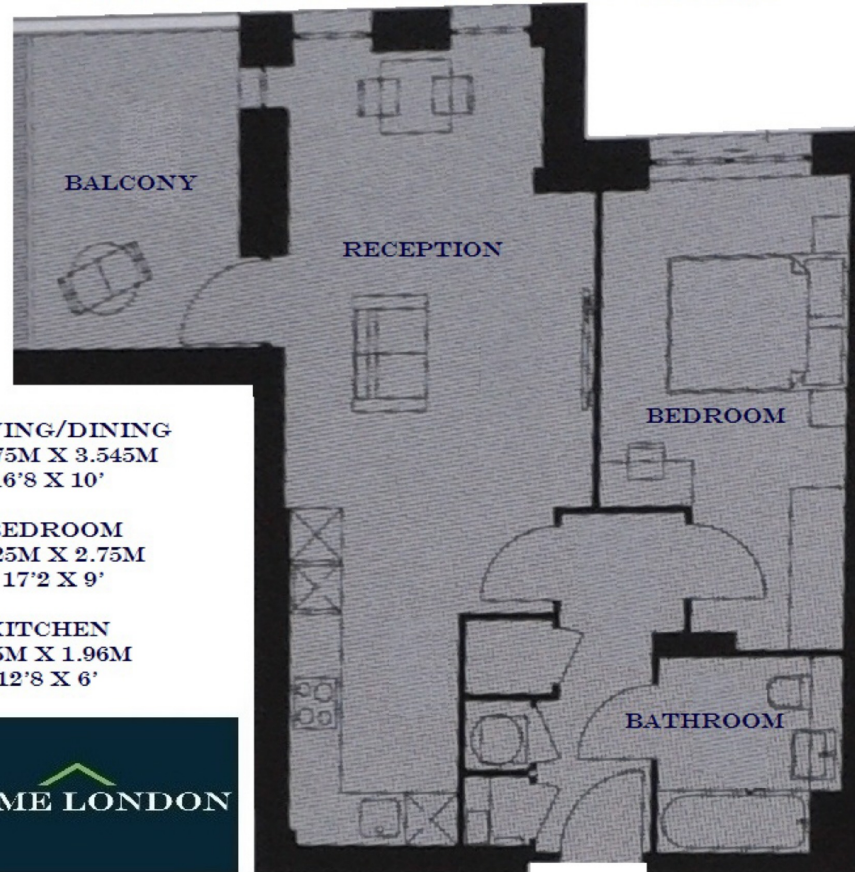
Ideal for both owner occupiers and buy-to-let investors looking to target professionals working in the City or Canary Wharf.

Available through Sole Agents Prime London.





COLUMBUS HOUSE, ENDERBY WHARF, GREENWICH SE10
SECOND FLOOR
GROSS INTERNAL AREA 564 SQ FT / 52.4 SQM



LIVING/DINING
5.075M X 3.545M
16'8" X 10'

BEDROOM
5.225M X 2.75M
17'2" X 9'

KITCHEN
3.85M X 1.96M
12'8" X 6'

