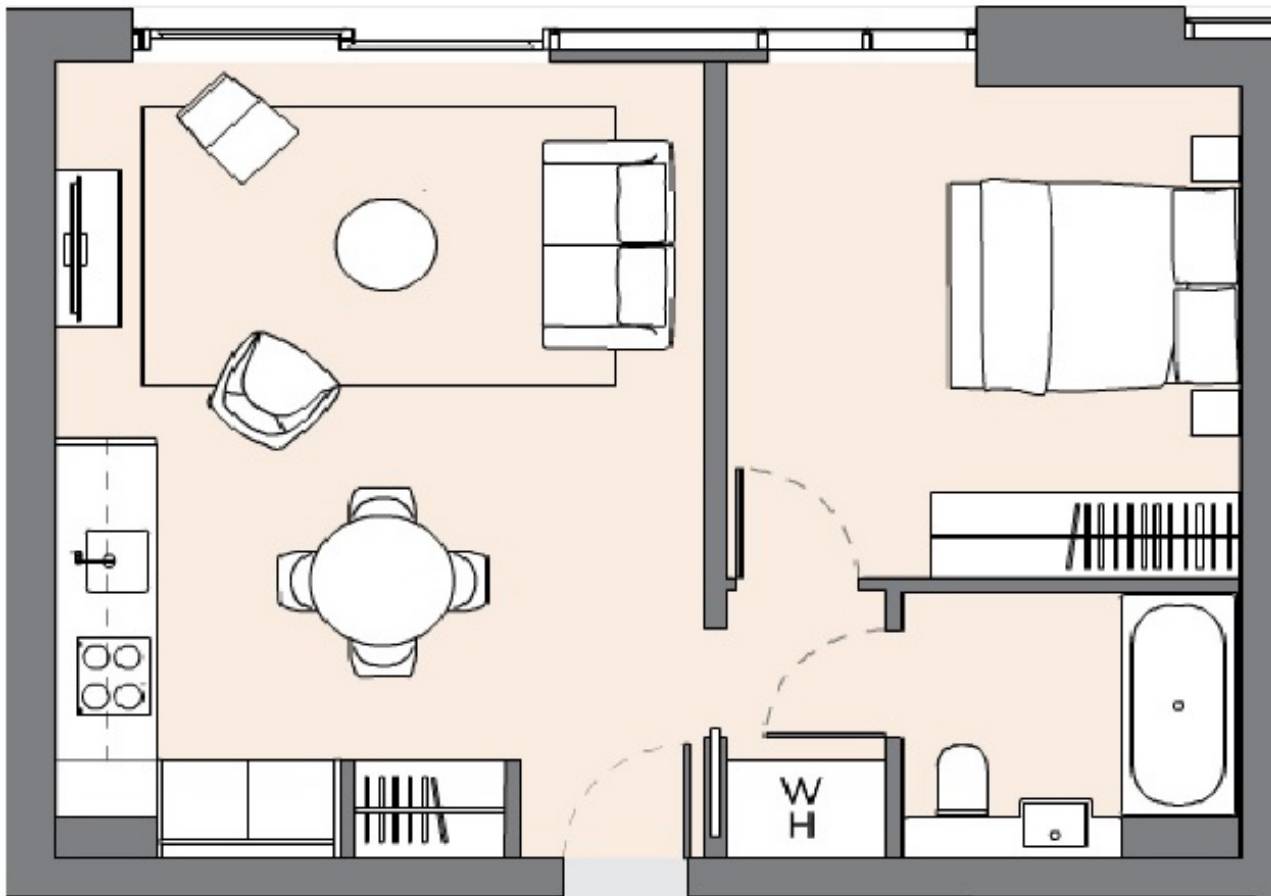




**BOLANDER GROVE NORTH, LILLIE SQUARE,
£765,000**



BOLANDER GROVE NORTH, LILLIE SQUARE, EARL'S COURT, SW6 **FIRST FLOOR**



TOTAL INTERNAL AREA
50.6 SQ M/545 SQ FT
LIVING AREA
4.5M X 6.2M/14' 9" X 20' 4"
BEDROOM
3.55M X 3.75M/11' 7" X 12' 3"
JULIET BALCONY

