



**KING'S GATE, 66-74 VICTORIA STREET,
£1,200,000**



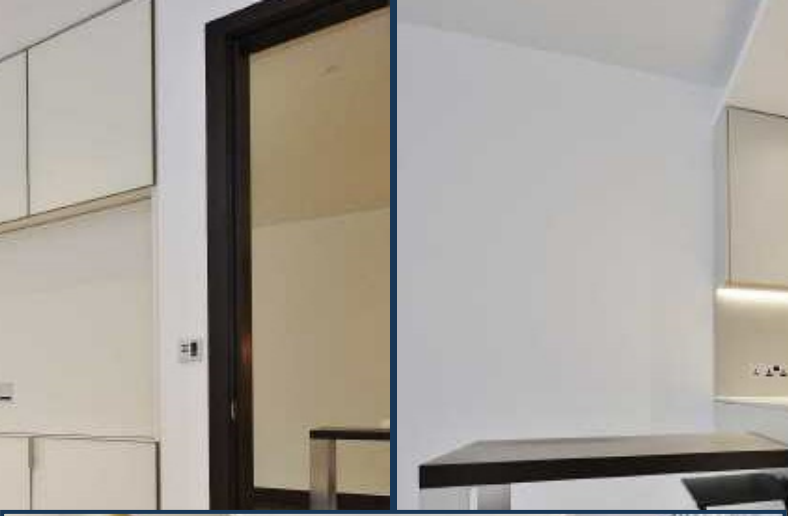
Brand new and available for first time occupation, an extremely large 812 sq ft (75.44 sqm) apartment in King's Gate, an executive and stylish development by Land Securities in this prime development area.

This apartment benefits from a spacious open plan kitchen/reception with lightly polished premium oak flooring, Modulnova units and tactile leather finish stone worktops, bedrooms with bespoke fitted storage with integrated lighting, bathroom with limestone flooring and walk-in shower, separate WC, thermostatically controlled under floor heating throughout and comfort cooling to the bedrooms and reception area.

King's Gate offers a 24 hour concierge service, prime central London location close to Buckingham Palace, moments from Victoria and St James's Park stations, Mayfair, Belgravia and the many restaurants and theatres of the West End.

Available with 999 year leasehold.







KINGS GATE, 66-74 VICTORIA STREET, LONDON SW1E

SECOND FLOOR

GROSS INTERNAL AREA 812 SQ FT / 75.43 SQM

