



**MARITIME BUILDING, ROYAL WHARF**

**£368,000**



20-30% cheaper than current prices, and the only opportunity to buy at phase 1 prices. A one bedroom 588 sq ft (54.6 sqm) apartment in phase 1 of Royal Wharf. The payment structure is 20% of purchase price to exchange contracts, with 80% on completion. This property is available as an off-plan investment sale, with the right for multiple assignments, for completion in late 2016. Royal Wharf will consist of 3,385 homes in total, a beautiful riverside walkway, new streets, connecting parks and squares, with the apartment buildings offering very generous 'family sized' apartments. Royal Wharf is located directly next to a new 35 acre development by ABP China, the largest development of its kind in the UK. This state-of-the-art business district will act as a platform for financial, high-tech and knowledge-driven industries looking to establish and drive forward their business in UK and European markets. This site represents one of the first direct investments by a Chinese developer in London's property market and will eventually be home to over 3.2 million square feet of high quality work, retail and leisure space, including 2.5 million square feet of prime office space, creating a new, vibrant 24/7 district on London's waterways.







LATITUDE HOUSE

MARITIME BUILDING

FLAGSHIP HOUSE

ADMIRALTY BUILDING

ANCHOR BUILDING

SOVEREIGN PLACE

THAMES STREET

RIVERSIDE WALK

RIVER THAMES

**LEGEND**

**A** Apartments

**T** Townhouses

BARRIER HOUSE

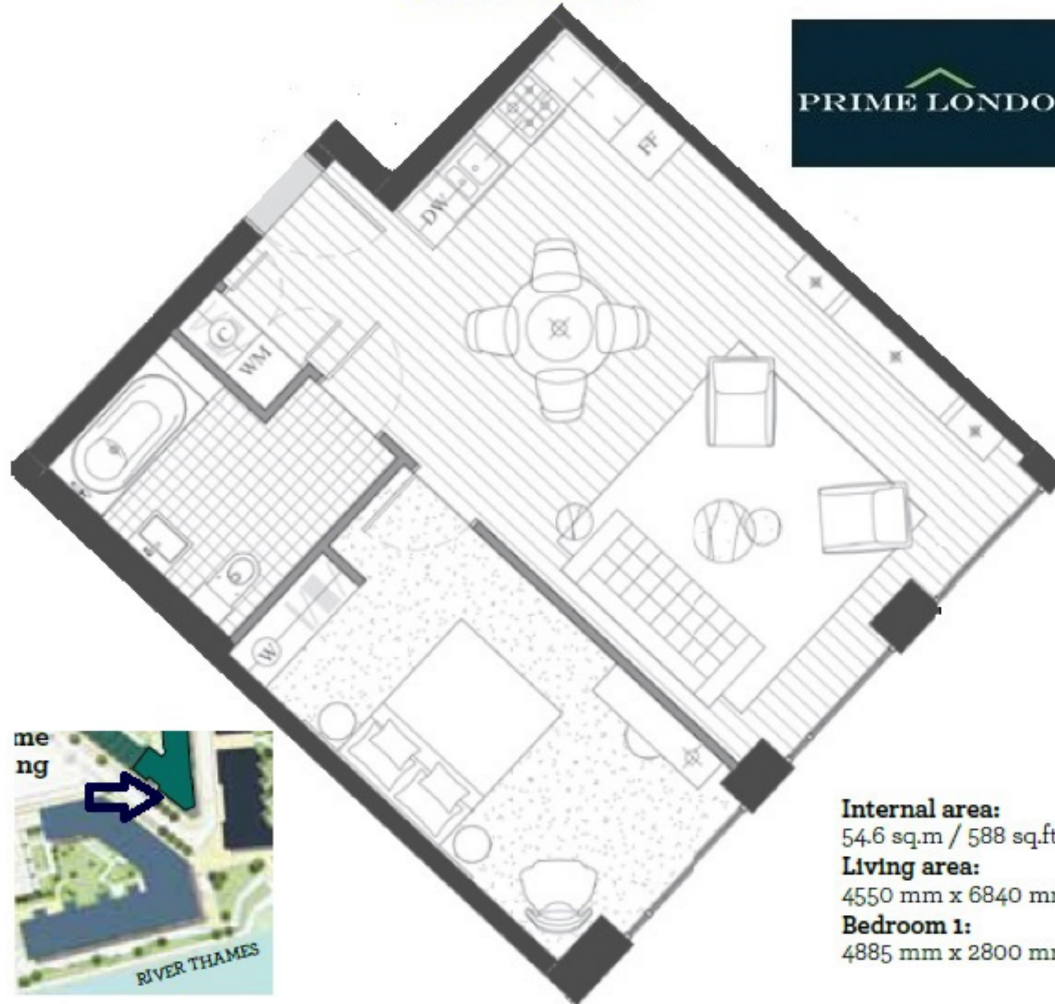
PRIME LONDON

MERIDIAN BUILDING

PONTOON DOCK DLR STATION



**MARITIME BUILDING, ROYAL WHARF, LONDON E16**  
**THIRD FLOOR**



**Internal area:**  
54.6 sq.m / 588 sq.ft  
**Living area:**  
4550 mm x 6840 mm  
**Bedroom 1:**  
4885 mm x 2800 mm