



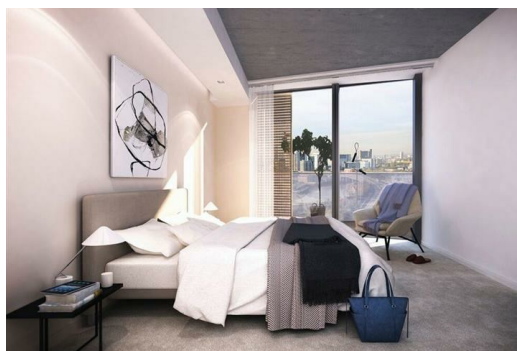
## 1208, Hoola East Tower, Siemens Brothers Way, London, E16 1BW


VIEWINGS AVAILABLE NOW! We are delighted to offer for sale this brand new one-bedroom apartment in London's Royal Docks.

The apartment is situated on the 12th floor with spectacular west facing views over the River Thames and The O2 towards Canary Wharf and The City.

An open plan kitchen-diner and lounge area is complemented by full height glazed doors opening out onto your spacious balcony which runs the length of the apartment and is accessible also from the bedroom.

HOOLA consists of 360 individually designed and generously-sized studios, 1, 2 and 3 bedroom apartments in two iconic towers. The units share the facilities of the gym, residents' lounge, and the comfort and security of the concierge services. Close to the forthcoming Asian Business Park, Silvertown Quays and Crossrail station.



Energy Efficiency Rating		
	Current	Potential
<i>Very energy efficient - lower running costs</i>		
(92 plus) A		
(81-91) B		
(69-80) C		
(55-68) D		
(39-54) E		
(21-38) F		
(1-20) G		
<i>Not energy efficient - higher running costs</i>		
<b>England &amp; Wales</b>	EU Directive 2002/91/EC	

Environmental Impact (CO <sub>2</sub> ) Rating		
	Current	Potential
<i>Very environmentally friendly - lower CO<sub>2</sub> emissions</i>		
(92 plus) A		
(81-91) B		
(69-80) C		
(55-68) D		
(39-54) E		
(21-38) F		
(1-20) G		
<i>Not environmentally friendly - higher CO<sub>2</sub> emissions</i>		
<b>England &amp; Wales</b>	EU Directive 2002/91/EC	