







Guide Price £265,000

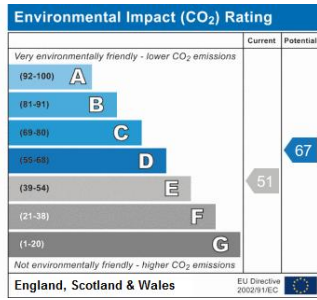
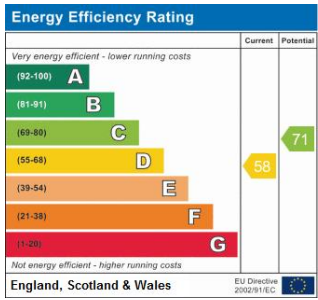
A one double bedroom first floor flat available in Bromley North Village. The block has just undergone a schedule of exterior maintenance and is offered chain free.

The property consists of a entrance hallway, reception room, separate kitchen, double bedroom and bathroom with shower over bath.

Other benefits include double glazed windows, high ceilings, new carpets and allocated parking space.

Conveniently located close to Bromley North Station and Bromley South Station, the property is ideal for commuters or buy to let investors.





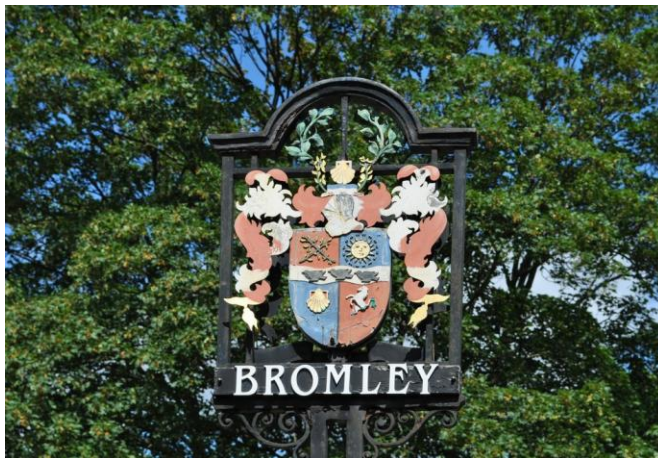
Please refer to

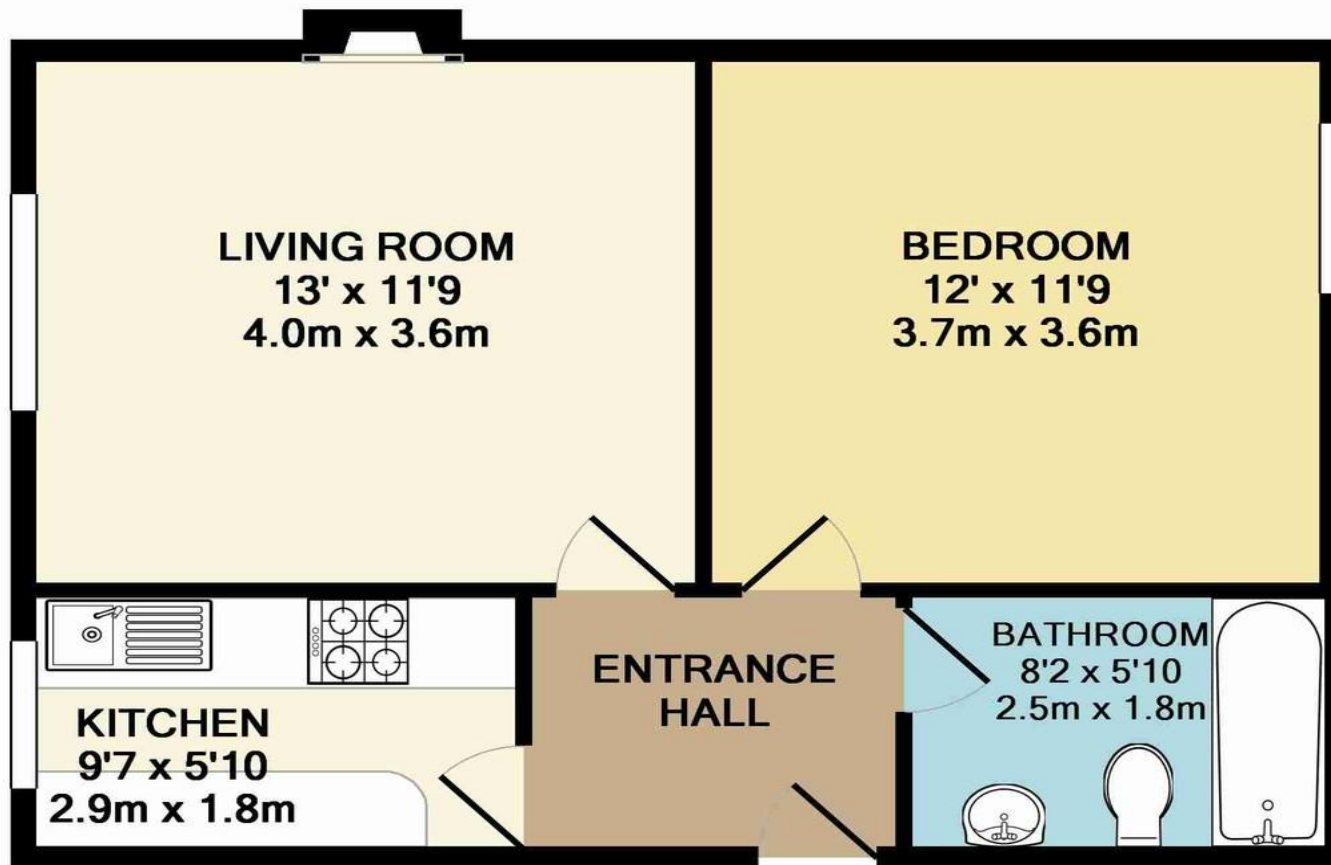
---

[www.jdmestateagents.com](http://www.jdmestateagents.com)

---

to view our full area guides





TOTAL APPROX. FLOOR AREA 442 SQ.FT. (41.0 SQ.M.)

Whilst every attempt has been made to ensure the accuracy of the floor plan contained here, measurements of doors, windows, rooms and any other items are approximate and no responsibility is taken for any error, omission, or mis-statement. This plan is for illustrative purposes only and should be used as such by any prospective purchaser. The services, systems and appliances shown have not been tested and no guarantee as to their operability or efficiency can be given

Made with Metropix ©2016

