



THE TOWER, ONE ST. GEORGE WHARF, NINE
£840,000

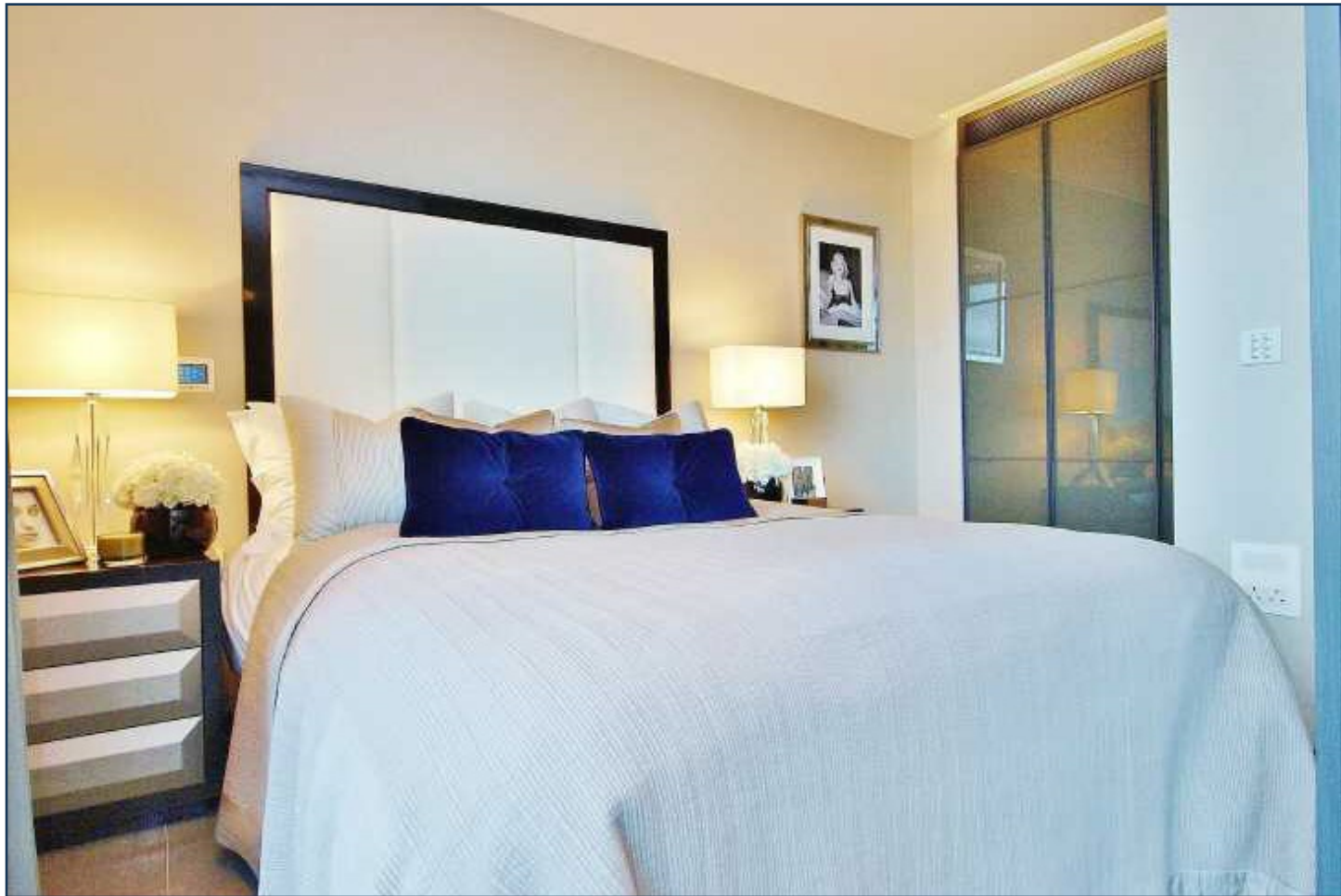


An exceptional sixth floor executive apartment for sale in the ultra high-specification One St. George Wharf.

This building offering the highest in design and style, whilst being located on the water's edge in the heart of central London.

All apartments have valet parking inclusive, and the building offers dedicated door service, 24 hour concierge, private health club with gym, infinity swimming pool, sauna and steam room, business facilities including a boardroom with conference facility, a business lounge and a private screening room and landscaped exterior gardens.

Available chain free to view immediately.





THE TOWER, ONE ST GEORGE WHARF
SIXTH FLOOR
GROSS INTERNAL AREA 511 SQ FT / 47.5 SQM

