



FLAGSHIP BUILDING, ROYAL WHARF

£359,775



At 20-30% cheaper than current prices, the only opportunity to buy at phase 1 prices. An excellent one bedroom 670 sq ft apartment in phase 1 of Royal Wharf. The payment structure is 20% of purchase price to exchange contracts with 80% on completion. This property is available as an off-plan investment sale, with the right for multiple assignments, for completion in late 2017.

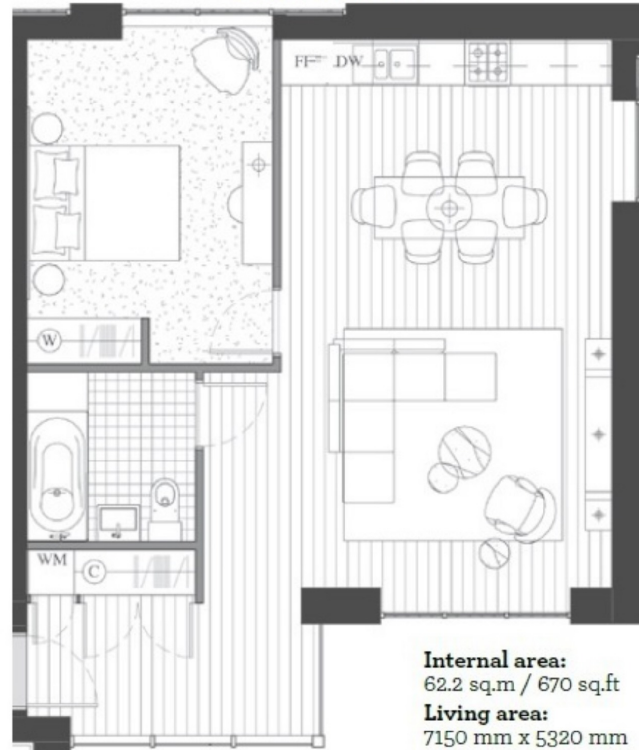
Royal Wharf will consist of 3,385 homes in total, a beautiful riverside walkway, new streets, connecting parks and squares, with the apartment buildings offering very generous 'family sized' apartments.

Royal Wharf is located directly next to a new 35 acre development by ABP China, the largest development of its kind in the UK. This state-of-the-art business district will act as a platform for financial, high-tech and knowledge-driven industries looking to establish and drive forward their business in UK and European markets. This site represents one of the first direct investments by a Chinese developer in London's property market and will eventually be home to over 3.2 million square feet of high





**FLAGSHIP BUILDING, ROYAL WHARF, E16
FIRST FLOOR**



Internal area:
62.2 sq.m / 670 sq.ft
Living area:
7150 mm x 5320 mm
Bedroom 1:
4240 mm x 3210 mm

