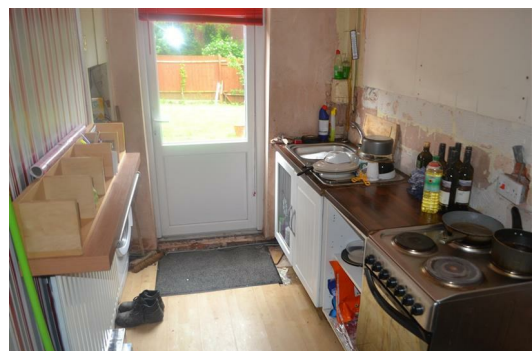
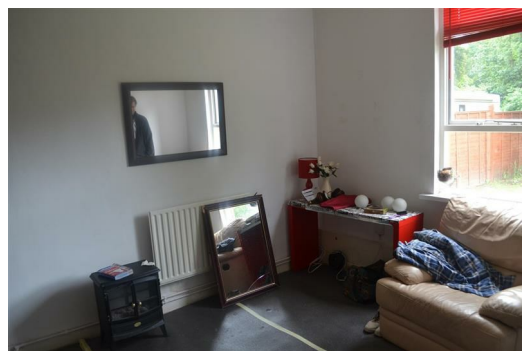




## Flat C, 213, Tettenhall Road, Wolverhampton, Staffordshire, WV6 0DE

Better Move are proud to offer this well-presented presented one bedroom ground floor flat located in Wolverhampton which is situated close to all local amenities such as transport links and shops. This property benefits from full double glazing and large gardens and briefly comprises of a lounge, study, kitchen, one bedroom and a bathroom.



Energy Efficiency Rating		
	Current	Potential
<i>Very energy efficient - lower running costs</i>		
(92 plus) A		
(81-91) B		
(69-80) C		
(55-68) D		
(39-54) E		
(21-38) F		
(1-20) G		
<i>Not energy efficient - higher running costs</i>		
<b>England &amp; Wales</b>	EU Directive 2002/91/EC	

Environmental Impact (CO <sub>2</sub> ) Rating		
	Current	Potential
<i>Very environmentally friendly - lower CO<sub>2</sub> emissions</i>		
(92 plus) A		
(81-91) B		
(69-80) C		
(55-68) D		
(39-54) E		
(21-38) F		
(1-20) G		
<i>Not environmentally friendly - higher CO<sub>2</sub> emissions</i>		
<b>England &amp; Wales</b>	EU Directive 2002/91/EC	

