





Guide Price £259,000

This one double bedroom purpose built apartment is situated on the ground floor and is Share of Freehold.

The living/dining room has a large window and is spacious enough to provide room for a dining table as well as living space. The kitchen features a range of base and wall units with an oven, hob and space for a fridge/freezer. The bathroom was renovated recently and is fitted with shower over bath, wash basin and toilet. The bedroom is bright and airy and includes fitted wardrobes. The property also benefits from storage in the hallway, off street parking, electric storage heaters and double glazed windows.

The property is located within easy reach of Bickley Station and Central Bromley shops with Intu shopping centre, High Street shops and restaurants.

Offered chain free.



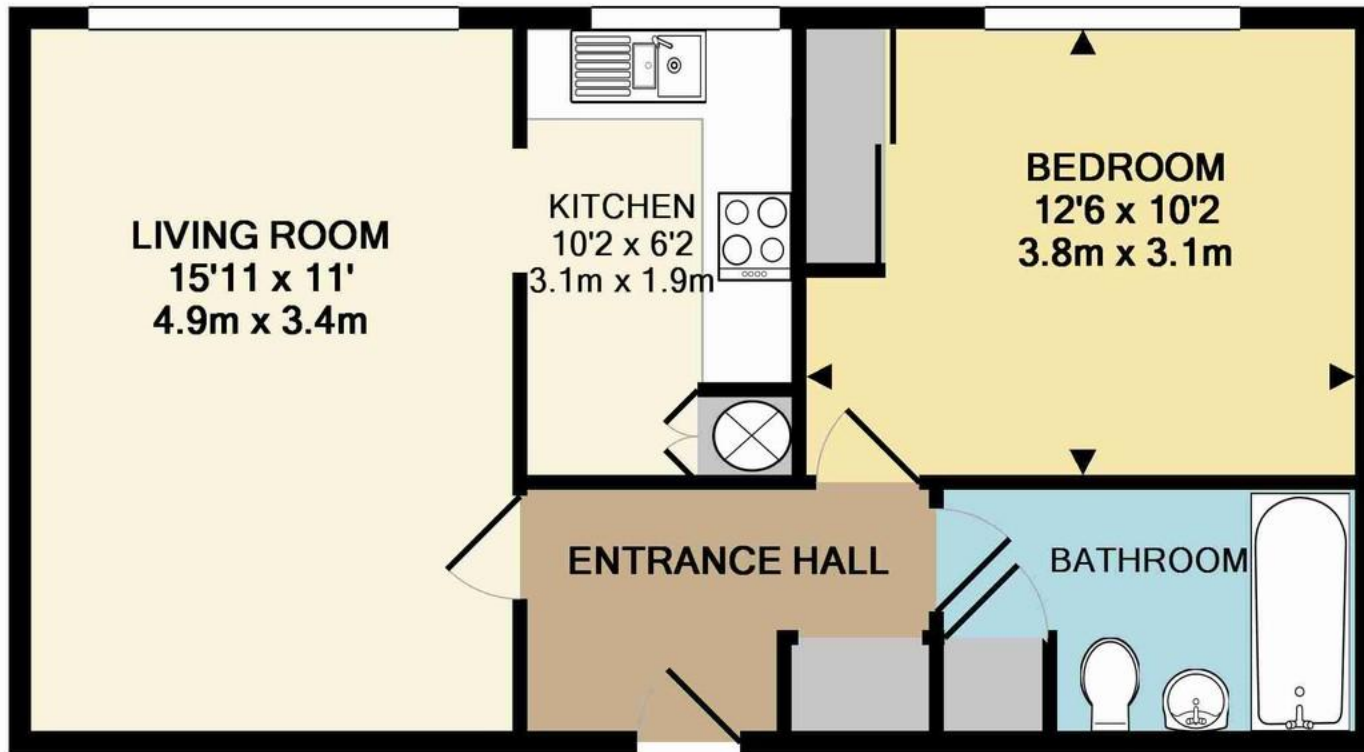
EPC to follow.

Please refer to

www.jdmestateagents.com

to view our full area guides





TOTAL APPROX. FLOOR AREA 471 SQ.FT. (43.7 SQ.M.)

Whilst every attempt has been made to ensure the accuracy of the floor plan contained here, measurements of doors, windows, rooms and any other items are approximate and no responsibility is taken for any error, omission, or mis-statement. This plan is for illustrative purposes only and should be used as such by any prospective purchaser. The services, systems and appliances shown have not been tested and no guarantee

as to their operability or efficiency can be given

Made with Metropix ©2016

