





Guide Price £280,000 - £300,000

A well presented one bedroom ground floor conversion flat. The property is located in a popular road within easy reach of Bromley town centre and nearby stations for fast connections into London.

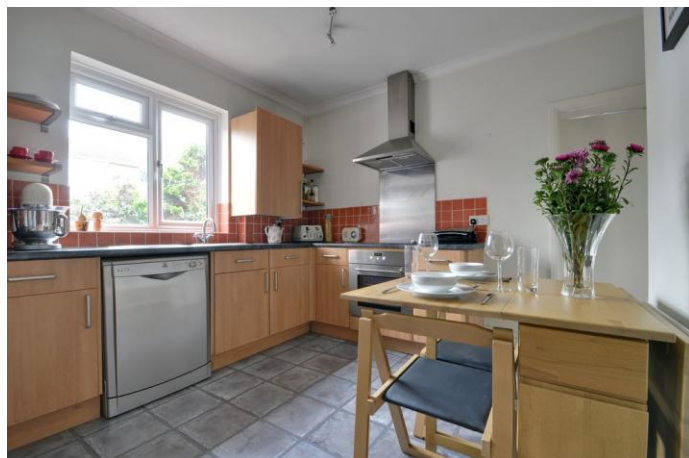
Accessed via its communal door entrance, the property opens to an entrance hallway. The living room has a feature fireplace and bay window.

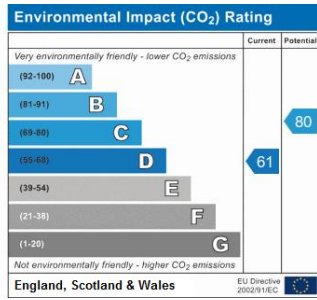
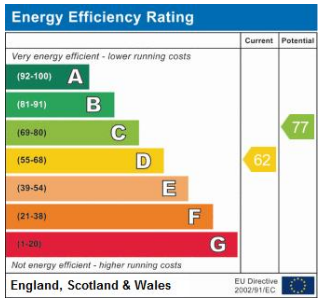
The bedroom is neutrally decorated and features built in shelves and wooden floors.

The kitchen offers flexible space for a dining table and is fitted with a range of wall and base units, hob, under counter oven and dishwasher. The property also benefits from a storage cupboard with plumbing for a washing machine, shared rear garden which includes laid lawn, storage shed and rear access.

The bathroom has been recently updated and is fitted with a shower over the bath, wc and wash basin, under floor heating and has been attractively tiled.

Viewings are highly recommended.



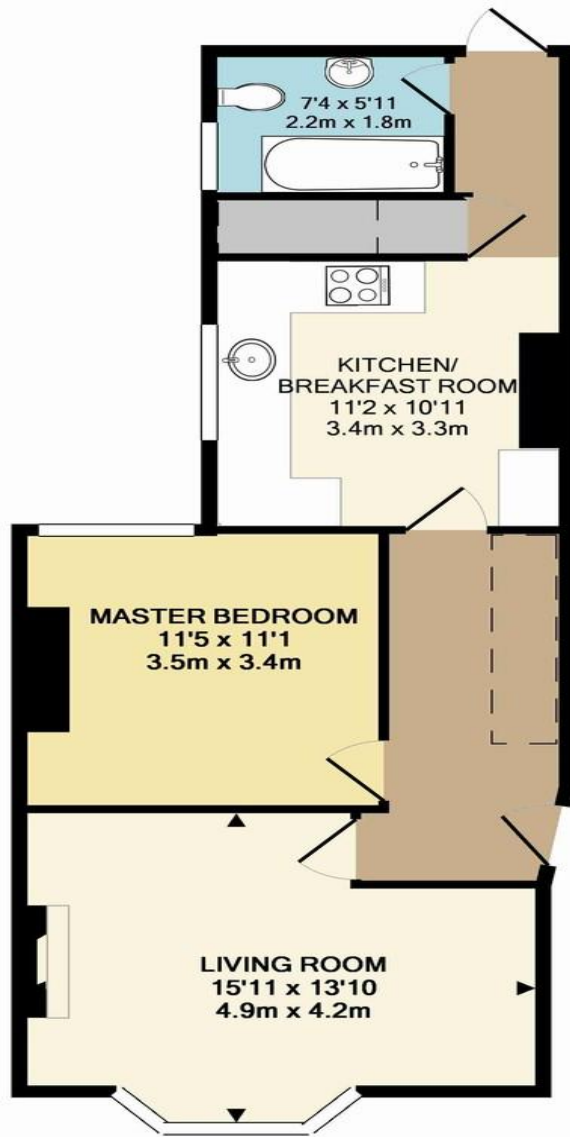


Please refer to

www.jdmestateagents.com

to view our full area guides





TOTAL APPROX. FLOOR AREA 583 SQ.FT. (54.1 SQ.M.)

Whilst every attempt has been made to ensure the accuracy of the floor plan contained here, measurements of doors, windows, rooms and any other items are approximate and no responsibility is taken for any error, omission, or mis-statement. This plan is for illustrative purposes only and should be used as such by any prospective purchaser. The services, systems and appliances shown have not been tested and no guarantee as to their operability or efficiency can be given
 Made with Metropix ©2016

