



**, Bridgwater  
Somerset TA5 2BQ**

**£700 Per Month**

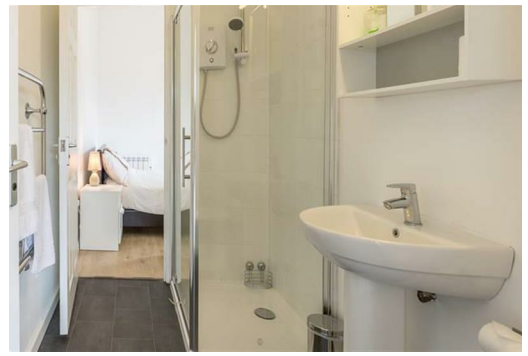
Unique fully furnished and all inclusive one bed apartment.

Situated on a private estate with lovely rural views.

Comprises of a double room, shower room, galley kitchen, and lounge area.  
Offered on an all inclusive fully furnished basis for short term or temporary accommodation.  
All bills included, including wifi.

Great access to the M5 at J23. 2 mins away from sport complex - 1610. Ideal location for those that like cycling or walking.





Energy Efficiency Rating		Current	Potential
Very energy efficient - lower running costs			
(92 plus) <b>A</b>			
(81-91) <b>B</b>			
(69-80) <b>C</b>			
(55-68) <b>D</b>			
(39-54) <b>E</b>			
(21-38) <b>F</b>			
(1-20) <b>G</b>			
Not energy efficient - higher running costs			
<b>England &amp; Wales</b>		EU Directive 2002/91/EC	

Environmental Impact (CO <sub>2</sub> ) Rating		Current	Potential
Very environmentally friendly - lower CO <sub>2</sub> emissions			
(92 plus) <b>A</b>			
(81-91) <b>B</b>			
(69-80) <b>C</b>			
(55-68) <b>D</b>			
(39-54) <b>E</b>			
(21-38) <b>F</b>			
(1-20) <b>G</b>			
Not environmentally friendly - higher CO <sub>2</sub> emissions			
<b>England &amp; Wales</b>		EU Directive 2002/91/EC	