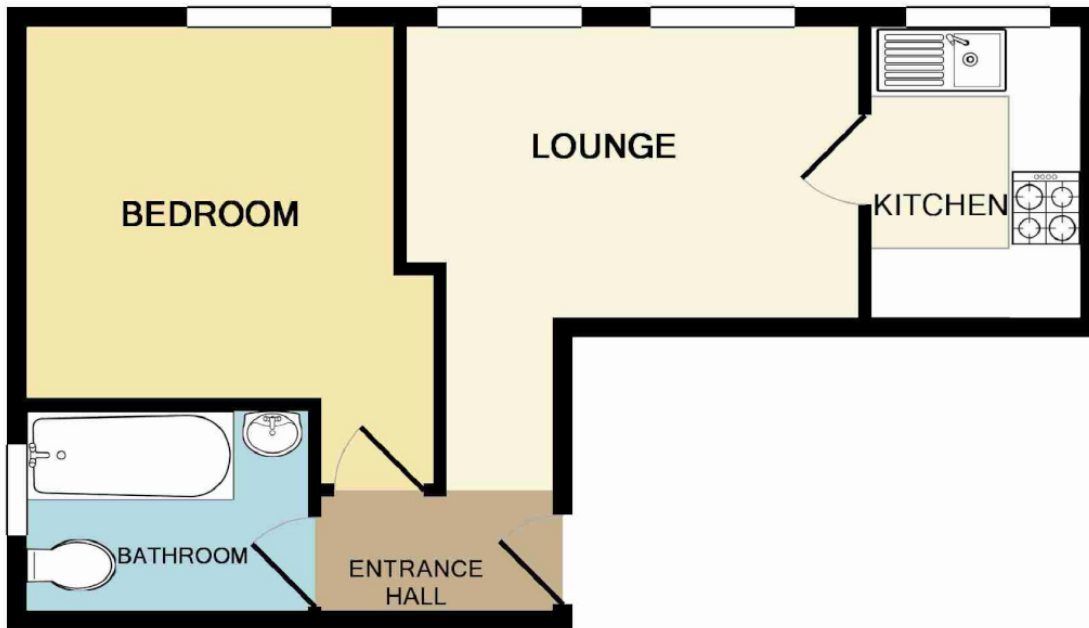




## Widmore Road | Bromley £900 pcm

Full Description One bedroom apartment situated on the second floor of this well maintained development. The property comprises living/dining room which leads to the kitchen with wall and base units including oven and hob and spaces for washing machine and fridge/freezer. The bedroom offers space for wardrobes. The bathroom comprises of bath with shower over, wash basin and w/c. The accommodation also benefits from communal parking and communal gardens. Offered furnished and available now!

Entrance Hall



TOTAL APPROX. FLOOR AREA 299 SQ.FT. (27.8 SQ.M.)

Whilst every attempt has been made to ensure the accuracy of the floor plan contained here, measurements of doors, windows, rooms and any other items are approximate and no responsibility is taken for any error, omission, or mis-statement. This plan is for illustrative purposes only and should be used as such by any prospective purchaser. The services, systems and appliances shown have not been tested and no guarantee as to their operability or efficiency can be given

Made with Metropix ©2014

## Contact Details

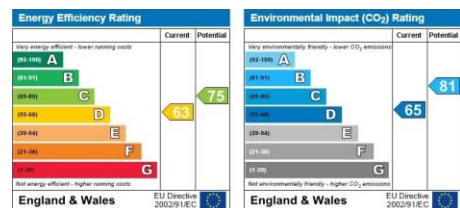
36 Station Square  
 Petts Wood  
 Orpington  
 Kent  
 BR5 1NA

[www.jdmestateagents.com](http://www.jdmestateagents.com)

[lettings@jdmlettings.com](mailto:lettings@jdmlettings.com)

01689 838040

Please refer to our website to see our full Area Guides.



IMPORTANT NOTICE: Every effort has been made to ensure the accuracy of these details however they form no part of any contract and are issued without responsibility on the part of the agents or landlord. Any intending tenant should satisfy themselves by inspection as to the correctness of each statement. Photographs may show only certain parts and aspects of the property at the time when the photographs were taken. We recommend that all information provided is verified by yourselves on inspection.