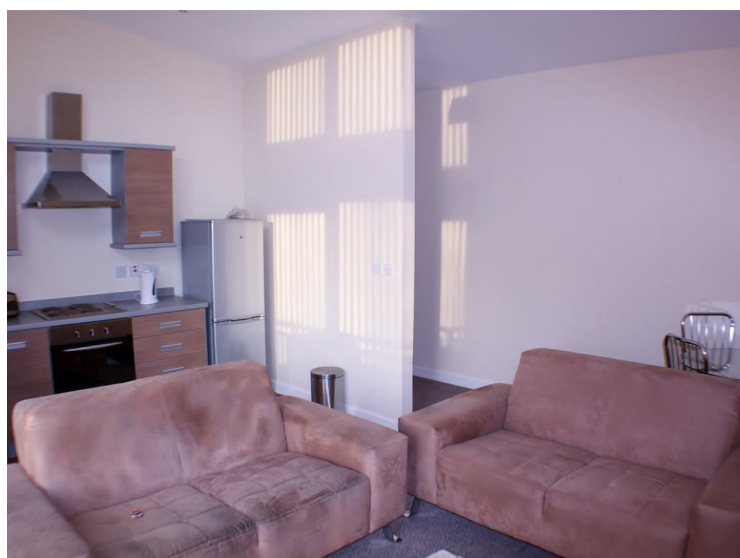
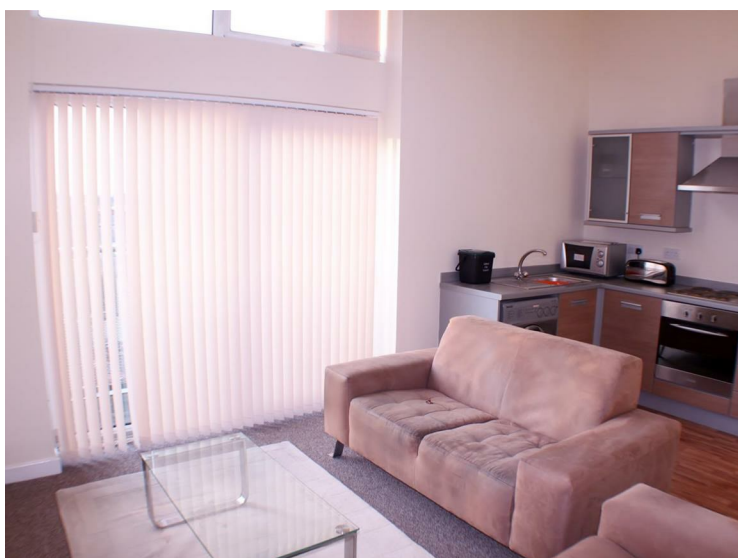


Eccles Fold, Manchester, M30 0NT



£495 Per calendar month

Like the man with two brains we have an apartment with two names...Eccles Fold is also know locally as St Andrews Court, it is an exceptionally well maintained development within the heart of Eccles. Located opposite St Andrews church a perfect place for a quiet moment in our busy lives and within a diverse suburban area that provides you with a strong sense of community, not too far away you will find a variety of conveniences including major supermarkets for all of your 24 hour needs, along with Eccles Town Centre providing a host of high street shops. Here you have terrific public transport links such as the train, tram and buses, with direct access into the lively Salford Quays and the ever cool Manchester City Centre. The actual apartment provides a good standard of living throughout, with a fabulous open plan living and modern kitchen area, with a huge window allowing tonnes of natural light to stream through, one perfectly sized double bedroom and a very practical bathroom. We are quite sure that this charming apartment will be snapped up in the blink of an eye. AVAILABLE BEGINNING OF SEPTEMBER! * FEES APPLICABLE PLEASE CONTACT THE OFFICE*

Bedroom



Bathroom



External



Open Plan Living / Kitchen



