



2



1



1

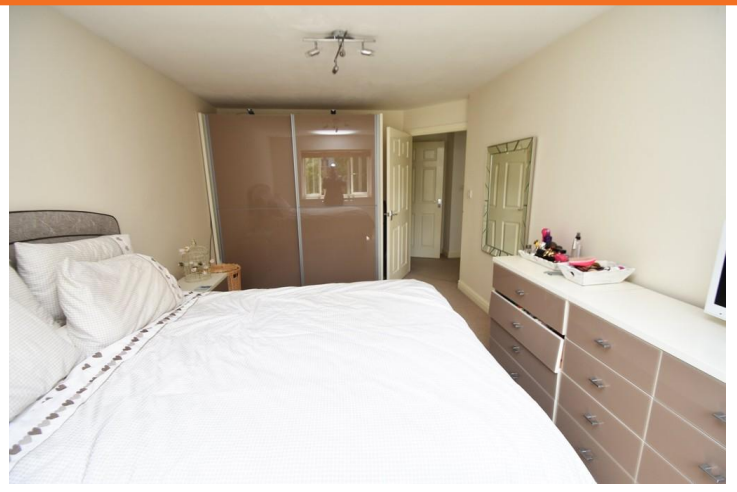
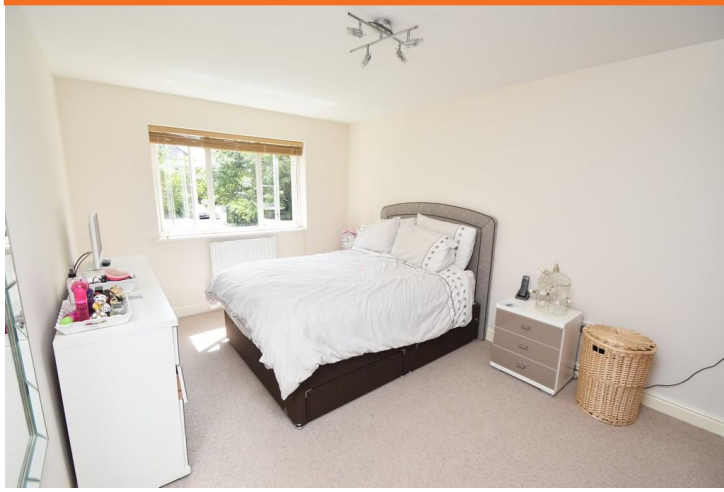


Churchill Court | Roxeth Green Avenue | Harrow | HA2 8BA

Rent £1,150 pcm

Spacious one double bedroom first floor purpose built flat within a purpose built apartment block built 2008. Benefitting from a 13'7 x 11'8 living room, 10'6 x 6'7 kitchen with washing machine and gas cooker, modern bathroom and 15'8 x 10'1 bedroom with wardrobes. Gas central heating, double glazed, entry phone and allocated parking. Located 0.4 miles from South Harrow's Piccadilly Line tube and bus stations and shops. Furnished/Part furnished. Available now.

- SPACIOUS ONE DOUBLE BEDROOM FLAT
- FIRST FLOOR
- PURPOSE BUILT
- 11'8 X 13'7 LIVING ROOM
- 10'6 X 6'7 KITCHEN
- GAS CENTRAL HEATING & DOUBLE GLAZED
- ENTRY PHONE
- FURNISHED/PART FURNISHED



EPC To Follow