



Asking Price Of £189,950 Leasehold

For Sale

Rental Yield: 4.58%

Selsdon Road CR2 6PU



[www.martincolondon.com](http://www.martincolondon.com)

**MARTIN&CO**

0208 688 8565

[croydon@martinco.com](mailto:croydon@martinco.com)

145 Brighton Road, South Croydon, Surrey, CR2 6EF

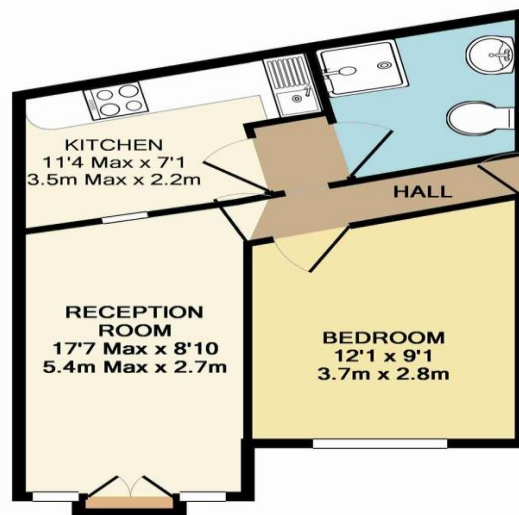
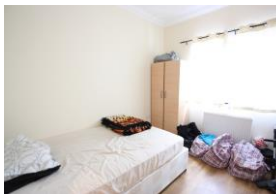
Accuracy: Whilst we endeavour to make our sales details accurate and reliable, if there is any point which is of particular importance to you, please contact the office and we will be pleased to check the information. Do so, particularly if contemplating travelling some distance to view the property. Sonic / laser Tape: All measurements have been taken using a sonic / laser tape measure and therefore, may be subject to a small margin of error. Services Not tested: The mention of any appliances and/or services within these Sales Particulars does not imply they are in full and efficient working order. All Measurements: All Measurements are Approximate: Mortgage & Financial Advice: The Martin & Co mortgage service is provided by London & Country Mortgages the UK's largest Independent Fee-Free mortgage broker of Beazer House, Lower Bristol Road, Bath, BA2 3BA. Authorised and regulated by the Financial Conduct Authority. Their FCA number is 143002. YOUR HOME IS AT RISK IF YOU DO NOT KEEP UP REPAYMENTS ON A MORTGAGE OR OTHER LOANS SECURED ON IT. Full written quotation available on request. A suitable life policy may be required. Loans subject to status. Minimum age 18.

Asking Price Of **£189,950** Leasehold

## 1 Bedroom Apartment

A well presented 1 bedroom second floor BUY TO LET INVESTMENT APARTMENT, located on South Croydon's refurbished high street, Selsdon Road. Excellent local shops nearby and easy access to transport with South Croydon Station less than a 1/4 of a mile's walk. Located above commercial premises with rear access via a side walkway to the rear. SOLD WITH TENANT paying £725 PCM with a Croydon Council Bond of £965. Please contact Martin & Co for further information.

- BUY TO LET INVESTMENT
- 1 BEDROOM
- SECOND FLOOR
- WELL PRESENTED
- LET AT £725 PCM
- NEW 125 YEAR LEASE
- ENTRYPHONE SECURITY
- ABOVE COMMERCIAL
- EPC Rating: B



TOTAL APPROX. FLOOR AREA 421 SQ.FT. (39.1 SQ.M.)

Whilst every attempt has been made to ensure the accuracy of the floor plan contained here, measurements of doors, windows, rooms and any other items are approximate and no responsibility is taken for any error, omission, or mis-statement. This plan is for illustrative purposes only and should be used as such by any prospective purchaser. The services, systems and appliances shown have not been tested and no guarantee as to their operability or efficiency can be given  
Made with Metropix ©2015



[www.martincolondon.com](http://www.martincolondon.com)

**MARTIN&CO**

0208 688 8565

[croydon@martinco.com](mailto:croydon@martinco.com)

145 Brighton Road, South Croydon, Surrey, CR2 6EF

Accuracy: Whilst we endeavour to make our sales details accurate and reliable, if there is any point which is of particular importance to you, please contact the office and we will be pleased to check the information. Do so, particularly if contemplating travelling some distance to view the property. Sonic / Laser Tape: All measurements have been taken using a sonic / laser tape measure and therefore, may be subject to a small margin of error. Services Not tested: The mention of any appliances and/or services within these Sales Particulars does not imply they are in full and efficient working order. All Measurements: All Measurements are Approximate: Mortgage & Financial Advice: The Martin & Co mortgage service is provided by London & Country Mortgages the UK's largest Independent Fee-Free mortgage broker of Beazer House, Lower Bristol Road, Bath, BA2 3BA. Authorised and regulated by the Financial Conduct Authority. Their FCA number is 143002. YOUR HOME IS AT RISK IF YOU DO NOT KEEP UP REPAYMENTS ON A MORTGAGE OR OTHER LOANS SECURED ON IT. Full written quotation available on request. A suitable life policy may be required. Loans subject to status. Minimum age 18.