



Asking Price Of £220,000 Leasehold For Sale

Bingham Road CR0 7EX



www.martincolondon.com

MARTIN & CO

0208 688 8565

croydon@martinco.com

145 Brighton Road, South Croydon, Surrey, CR2 6EF

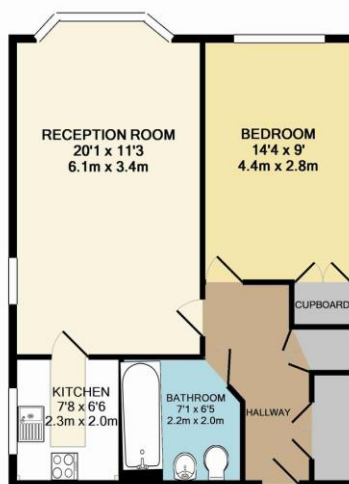
Accuracy: Whilst we endeavour to make our sales details accurate and reliable, if there is any point which is of particular importance to you, please contact the office and we will be pleased to check the information. Do so, particularly if contemplating travelling some distance to view the property. Sonic / laser Tape: All measurements have been taken using a sonic / laser tape measure and therefore, may be subject to a small margin of error. Services Not tested: The mention of any appliances and/or services within these Sales Particulars does not imply they are in full and efficient working order. All Measurements: All Measurements are Approximate: Mortgage & Financial Advice: The Martin & Co mortgage service is provided by London & Country Mortgages the UK's largest Independent Fee-Free mortgage broker of Beazer House, Lower Bristol Road, Bath, BA2 3BA. Authorised and regulated by the Financial Conduct Authority. Their FCA number is 143002. YOUR HOME IS AT RISK IF YOU DO NOT KEEP UP REPAYMENTS ON A MORTGAGE OR OTHER LOANS SECURED ON IT. Full written quotation available on request. A suitable life policy may be required. Loans subject to status. Minimum age 18.

Asking Price Of **£220,000** Leasehold

1 Bedroom Apartment

A spacious one bedroom first floor RETIREMENT APARTMENT set in this luxury block in Addiscombe FOR THE OVER 60'S ONLY. If you are looking for a superior development for your parent or a family member, which needs minor re-decorating and re-carpeting to their own taste, then this flat is the flat for you. Included in the service charges are well maintained communal entrance with entry phone security, residents lounge, communal gardens, gym, laundry, plus warden assistance if required. Suit able bodied resident who likes their own privacy. KEYS HELD. NO CHAIN!

- FIRST FLOOR
- ONE BEDROOM
- EXCLUSIVE OVER 60'S BLOCK
- COMMUNAL GARDENS
- EXCELLENT FACILITIES
- SHARED PARKING
- LIFT & ENTRY PHONE
- WARDEN/SECRETARY ON SITE



TOTAL APPROX. FLOOR AREA 534 SQ.FT. (49.6 SQ.M.)
Whilst every attempt has been made to ensure the accuracy of the floor plan contained here, measurements of doors, windows, rooms and any other items are approximate and no responsibility is taken for any error, omission, or mis-statement. This plan is for illustrative purposes only and should be used as such by any prospective purchaser. The services, systems and appliances shown have not been tested and no guarantee as to their operability or efficiency can be given.
Made with Metropix ©2015



www.martincolondon.com

MARTIN & CO

0208 688 8565

croydon@martinco.com

145 Brighton Road, South Croydon, Surrey, CR2 6EF

Accuracy: Whilst we endeavour to make our sales details accurate and reliable, if there is any point which is of particular importance to you, please contact the office and we will be pleased to check the information. Do so, particularly if contemplating travelling some distance to view the property. Sonic / Laser Tape: All measurements have been taken using a sonic / laser tape measure and therefore, may be subject to a small margin of error. Services Not tested: The mention of any appliances and/or services within these Sales Particulars does not imply they are in full and efficient working order. All Measurements: All Measurements are Approximate: Mortgage & Financial Advice: The Martin & Co mortgage service is provided by London & Country Mortgages the UK's largest Independent Fee-Free mortgage broker of Beazer House, Lower Bristol Road, Bath, BA2 3BA. Authorised and regulated by the Financial Conduct Authority. Their FCA number is 143002. YOUR HOME IS AT RISK IF YOU DO NOT KEEP UP REPAYMENTS ON A MORTGAGE OR OTHER LOANS SECURED ON IT. Full written quotation available on request. A suitable life policy may be required. Loans subject to status. Minimum age 18.