

# GAINSBOROUGH HOUSE | CANARY CENTRAL

---

FOR SALE



£325,000 Leasehold

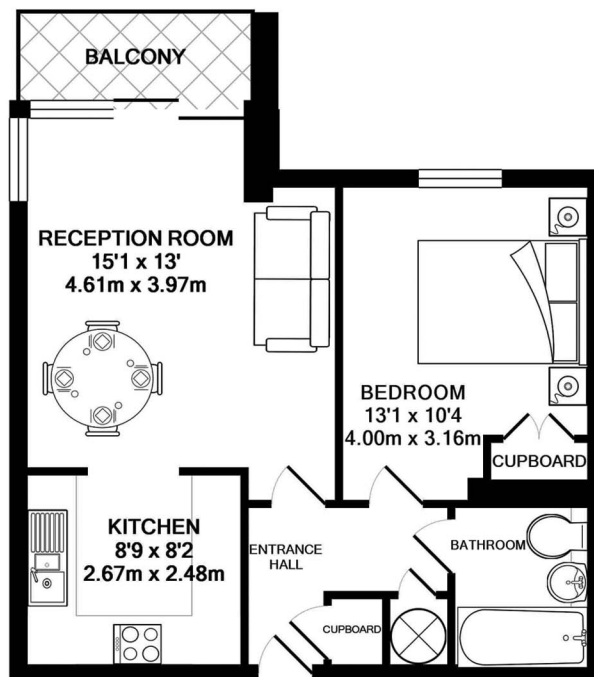


Plot size: 500 ft<sup>2</sup>

We are delighted to offer this 1 bedroom apartment in Gainsborough House in the Canary Central Development close to Canary Wharf. Includes private Balcony, Lift access, concierge, and secure entry plus secure underground parking.

The apartment is currently let to a corporate client but can be bought with vacant possession. It offers approx 500sqft plus private balcony, a spacious living/dinning area, Fitted kitchen and good size bedroom. It has recently had new carpet and has been painted throughout. There is a private gym and swimming pool which you have access too plus secure underground parking and 24 hour concierge. Transport links close to the property include South Quay DLR Station with Canary Wharf Underground Station (Jubilee line and DLR services) within reach

**Viewing**  
Please contact our London Office on 020 7956 2080 if you wish to arrange a viewing appointment for this property or require further information.



TOTAL APPROX. FLOOR AREA 499 SQ.FT. (46.4 SQ.M.)

Whilst every attempt has been made to ensure the accuracy of the floor plan contained here, measurements of doors, windows, rooms and any other items are approximate and no responsibility is taken for any error, omission, or mis-statement. This plan is for illustrative purposes only and should be used as such by any prospective purchaser. The services, systems and appliances shown have not been tested and no guarantee as to their operability or efficiency can be given

These particulars are compiled with care to give a fair and accurate description but they do not constitute an offer or contract. Icon Residential reserve the right to alter any property description without prior notice.