



GROSVENOR STREET, MAYFAIR W1

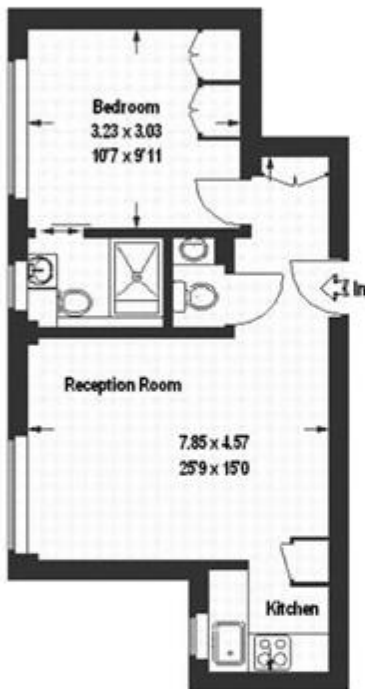
Price
£650 per week

Sweet one bedroom flat on the third floor of this excellent purpose built block with porterage. The apartment benefits from wooden floors throughout, comprises of entrance hall, reception room, kitchen, double bedroom, bathroom, guest cloakroom and is located in the very heart of Mayfair and has easy access to all amenities.

Details

- Bedroom
- Bathroom
- Reception room
- Kitchen
- Lift
- Porter





Third Floor

Grosvenor Street

Approximate Gross Internal Area = 37.9 sq m / 408 sq ft

Illustration for Identification Purpose Only. Not to Scale.

Terms and Conditions

Available: Available 31/08/2015 For Long Let
Price: £650 per week

EPC Information



The energy efficiency rating is a measure of the overall efficiency of a home. The higher the rating the more energy efficient the home is and the lower the fuel bills are likely to be.

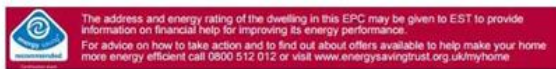
The environmental impact rating is a measure of a home's impact on the environment in terms of carbon dioxide (CO₂) emissions. The higher the rating the less impact it has on the environment.

Estimated energy use, carbon dioxide (CO₂) emissions and fuel costs of this home

	Current	Potential
Energy use	342 kWh/m ² per year	337 kWh/m ² per year
Carbon dioxide emissions	3.0 tonnes per year	3.0 tonnes per year
Lighting	£31 per year	£18 per year
Heating	£272 per year	£275 per year
Hot water	£85 per year	£85 per year

Based on standardised assumptions about occupancy, heating patterns and geographical location, the above table provides an indication of how much it will cost to provide lighting, heating and hot water to this home. The fuel costs only take into account the cost of fuel and not any associated service, maintenance or safety inspection. This certificate has been provided for comparative purposes only and enables one home to be compared with another. Always check the date the certificate was issued, because fuel prices can increase over time and energy saving recommendations will evolve.

To see how this home can achieve its potential rating please see the recommended measures.



SUBJECT TO CONTRACT

VIEWING STRICTLY BY APPOINTMENT