



BEAUCHAMP PLACE, KNIGHTSBRIDGE, SW3

Price
£575 per week

Spacious and light one bedroom flat with sunny West facing views in the heart of Knightsbridge. 750 sq ft. The property is exceptionally large and has well proportioned rooms, but to note is the sizeable eat-in fully-fitted granite kitchen. There is plenty of fitted storage in the bedroom and the reception room and bathroom are also spacious. The flat is neutrally decorated and offered on an unfurnished basis. Beauchamp Place is in the heart of Knightsbridge with all shops and transport facilities on your doorstep and Harrods a moment's walk. Offered Unfurnished or Part Furnished. Viewings highly recommended.

Details

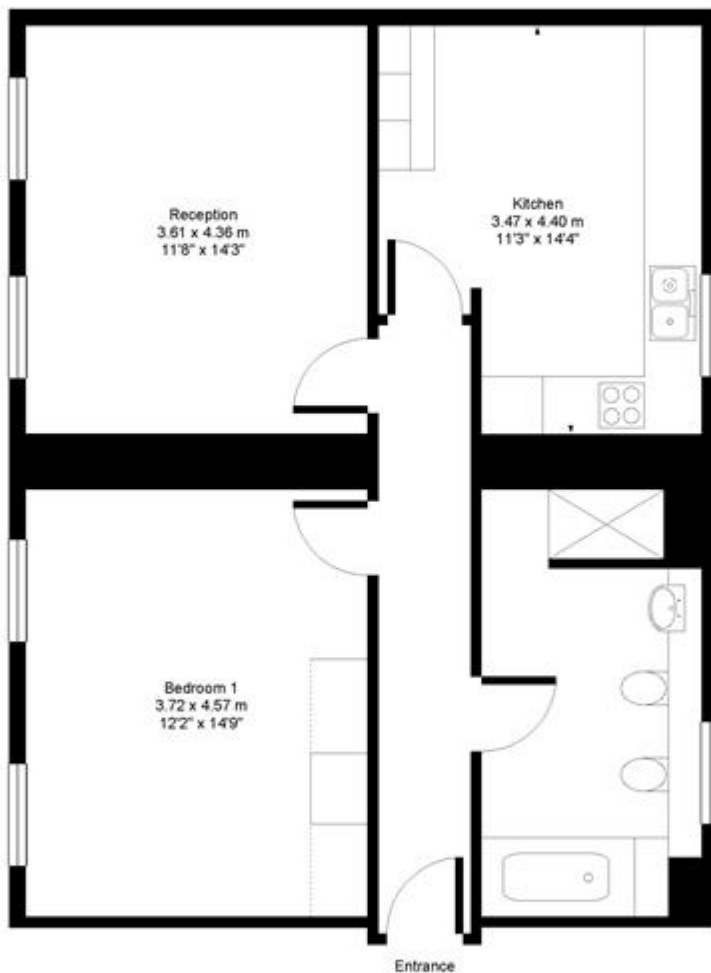
Double Bedroom
Bathroom
Reception Room
Eat-In Kitchen
Council Tax Band E



Beauchamp Place SW3



Approx. Gross Floor Area = 69 sq.meters • 750 sq.feet



SECOND FLOOR


For illustrative purposes only. Not drawn to Scale. Prepared by Swan Photography 07974 264576

Terms and Conditions

Available: Available 18/09/2015 For Long Let
Price: £575 per week

EPC Information

Energy Performance Certificate



Beauchamp Place, LONDON, SW3 1NG

Dwelling type: Top-floor flat Reference number: 8509-0267-2529-7926-2673
 Date of assessment: 26 June 2013 Type of assessment: RdSAP, existing dwelling
 Date of certificate: 27 June 2013 Total floor area: 71 m²

Use this document to:

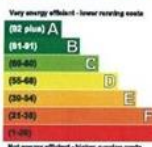
- Compare current ratings of properties to see which properties are more energy efficient
- Find out how you can save energy and money by installing improvement measures

Estimated energy costs of dwelling for 3 years:	£ 2,226
Over 3 years you could save	£ 267

Estimated energy costs of this home			
	Current costs	Potential costs	Potential future savings
Lighting	£ 207 over 3 years	£ 141 over 3 years	<div style="background-color: #008000; color: white; padding: 10px; display: inline-block;"> You could save £ 267 over 3 years </div>
Heating	£ 1,860 over 3 years	£ 1,699 over 3 years	
Hot Water	£ 129 over 3 years	£ 128 over 3 years	
Totals	£ 2,226	£ 1,959	

These figures show how much the average household would spend in this property for heating, lighting and hot water. This excludes energy use for running appliances like TVs, computers and cookers, and any electricity generated by microgeneration.

Energy Efficiency Rating



Very energy efficient - lower heating costs
 (82 plus) A
 (81-81) B
 (80-80) C
 (75-80) D
 (70-74) E
 (65-69) F
 (55-64) G
 Not energy efficient - higher heating costs

Current	Potential
E	F

The graph shows the current energy efficiency of your home.

The higher the rating the lower your fuel bills are likely to be.

The potential rating shows the effect of undertaking the recommendations on page 3.

The average energy efficiency rating for a dwelling in England and Wales is band D (rating 60).

Top actions you can take to save money and make your home more efficient

Recommended measures	Indicative cost	Typical savings over 3 years	Available with Green Deal
1 Internal or external wall insulation	£4,000 - £14,000	£ 108	✔
2 Low energy lighting for all fixed outlets	£36	£ 60	✔
3 Replace single glazed windows with low-E double glazing	£3,300 - £6,500	£ 99	✔

To find out more about the recommended measures and other actions you could take today to save money, visit www.direct.gov.uk/savingenergy or call 0300 123 1234 (standard national rate). The Green Deal may allow you to make your home warmer and cheaper to run at no up-front cost.

SUBJECT TO CONTRACT

VIEWING STRICTLY BY APPOINTMENT