



3 Cresta Court, 3 Crescent Road, Bournemouth, Dorset, BH2 5SS

£600 Per Calendar Month

ONE BEDROOM TOWN CENTRE LOCATION - FULLY FURNISHED - OFF ROAD PARKING - AVAILABLE
FEBRUARY 2016



This one bedroom ground floor flat has a great town centre location with the benefit of allocated parking. The property is modern throughout and comes fully furnished. There is an open plan lounge/kitchen with appliances, a double bedroom and modern bathroom. This flat wont hang around for long, so please book a viewing quickly.

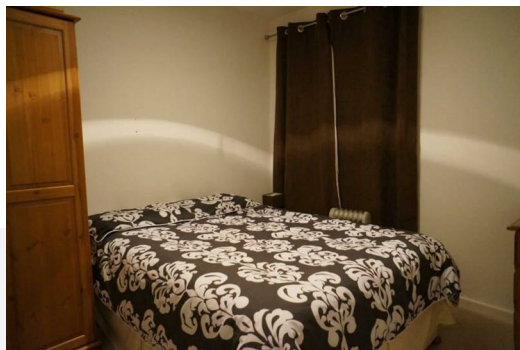
Single occupancy only, no couples.

Available from 19th February 2016

No DSS.

No pets.

Council Tax Band A



Energy Efficiency Rating		Environmental Impact (CO ₂) Rating	
Current	Potential	Current	Potential
Energy Efficiency Rating			
The Energy Efficiency Rating (EER) shows how much energy your property uses to provide heating, hot water, and lighting. The EER is based on the energy performance of the property and the energy efficiency of the heating system. The EER is a measure of the energy efficiency of the property and is based on the energy performance of the property and the energy efficiency of the heating system.			
Environmental Impact (CO ₂) Rating			
The Environmental Impact (CO ₂) Rating shows the amount of CO ₂ emissions from the property. The rating is based on the energy performance of the property and the energy efficiency of the heating system. The rating is a measure of the environmental impact of the property and is based on the energy performance of the property and the energy efficiency of the heating system.			