



**Flat 7, 2 Heathcote Road, Boscombe, Bournemouth, Dorset, BH5  
1EZ**





LARGE 1 BED FLAT - SPACIOUS BRIGHT LOUNGE - MODERN BATHROOM - NEW GAS CENTRAL HEATING - ALLOCATED PARKING FOR ONE CAR - AVAILABLE NOW

This bright and spacious first floor flat is conveniently located within a short walk from the shopping facilities of Boscombe high street as well as the main bus routes.

The property has a large lounge with high ceilings and South facing windows as well as a separate kitchen, recently fitted modern bathroom bathroom and good sized double bedroom.

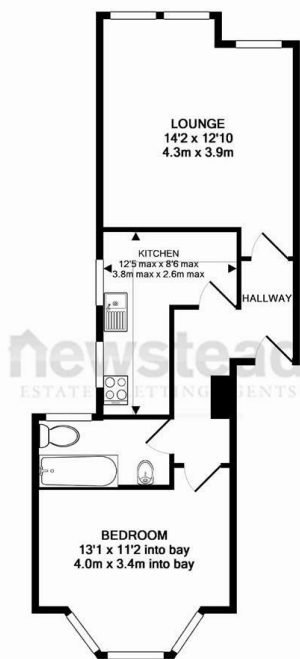
The flat has has a new efficient gas boiler and has recently been redecorated throughout.

Available from 29th April 2016

No Pets

DSS considered with a guarantor

No Children



TOTAL APPROX. FLOOR AREA 507 SQ.FT. (47.1 SQ.M.)

Whilst every attempt has been made to ensure the accuracy of the floor plan contained here, measurements of doors, windows, rooms and any other items are approximate and no responsibility is taken for any error, omission, or mis-statement. This plan is for illustrative purposes only and should be used as such by any prospective purchaser. The services, systems and appliances shown have not been tested and no guarantee as to their operability or efficiency can be given  
Made with Metropix ©2015

You may download, store and use the material for your own personal use and research. You may not republish, retransmit, redistribute or otherwise make the material available to any party or make the same available on any website, online service or bulletin board of your own or of any other party or make the same available in hard copy or in any other media without the website owner's express prior wr

**Newstead Estate & Lettings Agents Ltd**  
122-124 Castle Lane West, Bournemouth, Dorset, BH9 3JU  
Tel: 01202 430 108  
Email: [info@newsteadproperty.co.uk](mailto:info@newsteadproperty.co.uk)  
[www.newsteadproperty.co.uk](http://www.newsteadproperty.co.uk)

**newstead**  
ESTATE & LETTING AGENTS