



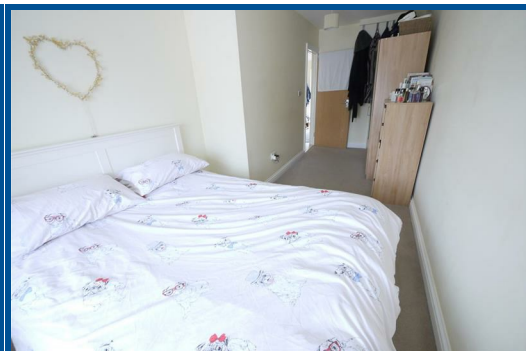
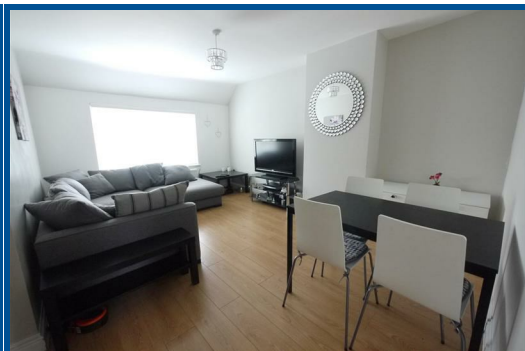
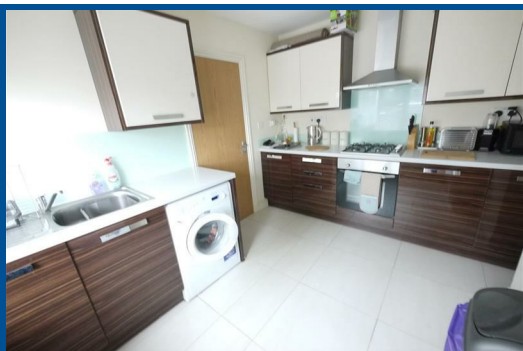
Cheshunt: Tel: 01992 621116

www.jrpropertieservices.co.uk

Cuffley: Tel: 01707 872111



STATION ROAD, CUFFLEY, HERTFORDSHIRE



VIEWING RECOMMENDED!
PRICE £795 PER CALENDAR MONTH

Cuffley: 24 Station Road, Cuffley, Herts EN6 4HT
email: cuffley@jrpropertieservices.co.uk

Cheshunt: 56 Turners Hill, Cheshunt, Herts EN8 8LQ
email: cheshunt@jrpropertieservices.co.uk

All photographs shown are for illustration only and may show items that are not for sale or included in the sale of the property. Please note that all measurements have a 5% tolerance level. 'None of the statements contained in these particulars as to this property are to be relied on as statements of representation of fact.'



• **1 BEDROOM** • **GAS CENTRAL HEATING** • **KITCHEN** • **BATHROOM** • **LOUNGE** • **CLOSE TO MAINLINE TRAIN STATION**

We are pleased to offer a spacious 1 bedroom flat situated in central Cuffley above a local restaurant. Benefits include Gas central heating, spacious living accommodation and is within only a short walk of local shops and mainline train line to Moorgate.

Available early October.

Private Tenants only. No DSS

Entrance via double glazed opaque upvc door



HALL

Radiator. Tiled flooring. Doors to:-



KITCHEN 10'11 x 9'3 max

Double glazed window to the rear. Double radiator. Range of fitted wall and base units with work surfaces over incorporating stainless steel sink and drainer with mixer tap. Electric oven with gas hob and extractor fan over. Free standing fridge / freezer. Washing machine. Tiled floors.



BATHROOM

Opaque double glazed window to the rear. Double radiator. Extensively tiled walls. Tiled floor. suite comprising: Low flush WC. pedestal wash hand basin with mixer tap. panel bath with shower screen and shower over. Extractor fan.



BEDROOM 18'10 x 8' max

Double glazed window to the front. double radiator. Access to loft space.



LOUNGE 15'7 x 12'10 narrowing to 10'9

Double glazed window to the front. Double radiator. Laminate wooden flooring.