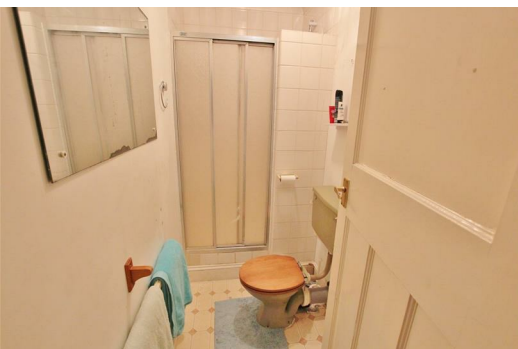




**Room 5, 7 Malmesbury Park Place, Springbourne, Bournemouth, BH8 8PH**

**£100 Per Week**

DOUBLE ROOM WITH OWN EN-SUITE | ALL BILLS INCLUDED | AVAILABLE FROM FEBRUARY 2016



This room is on the first floor and has a bright bay window in the corner. There is gas central heating and UPVC double glazing throughout and also a small rear garden. On the ground floor there is a communal kitchen with appliances.

See floor plan for room sizes and layout

This house definitely provides good value accommodation in a convenient position.

Students welcome with a guarantor

No DSS

No couples

Available from 2nd February 2016

