







### **Guide Price £400,000-£420,000**

Jdm are delighted to offer as sole agents this well presented, two double bedroom, period end terrace property with scope to extend into the loft (subject to normal planning consents) located in a popular cul-de-sac in Farnborough Village, with easy access to Farnborough Village primary and Darrick Wood Schools.

The accommodation comprises entrance hall opening to large through living/dining room, leading to a modern kitchen with beech coloured units and black gloss worktops, integrated single oven and hob, space for washing machine, dishwasher and fridge/freezer. From the kitchen there is a garden room leading out to the garden.

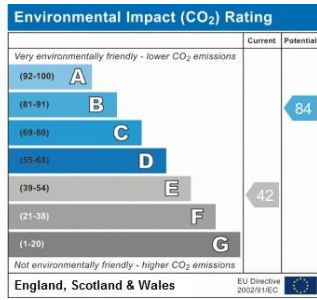
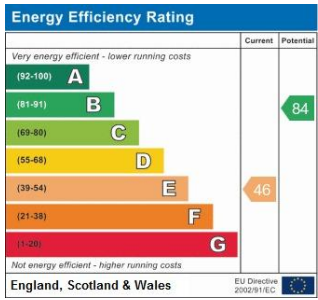
Upstairs there are two double bedrooms, the master is a good size with built-in part mirror fronted sliding wardrobes. The large bathroom has recently been refitted with white furniture, toilet and sink vanity unit.

The garden to the rear is southerly facing, mainly laid to lawn and measuring about 50' in length with two sheds to remain. To the front is a small courtyard garden.

Unrestricted parking is in the road. Viewing comes highly recommended.







Please refer to

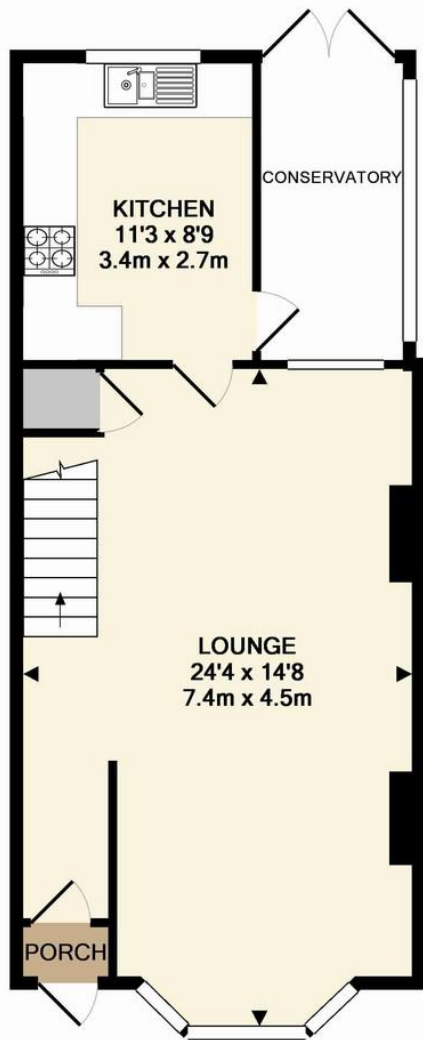
---

[www.jdmestateagents.com](http://www.jdmestateagents.com)

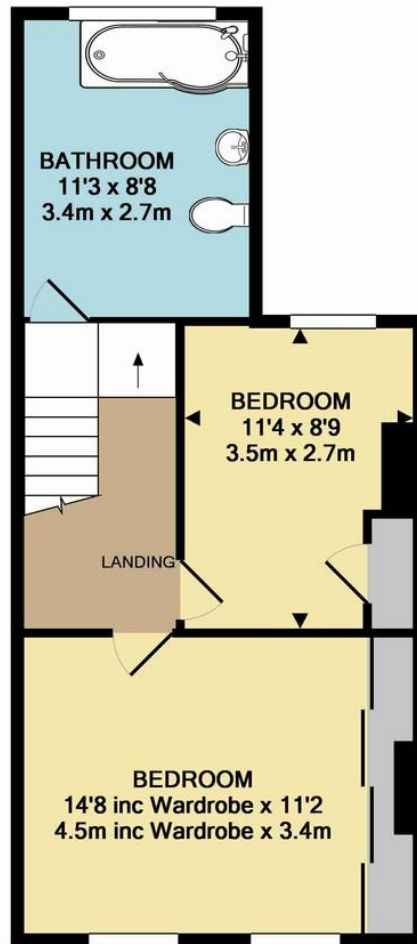
---

to view our full area guides





GROUND FLOOR  
APPROX. FLOOR  
AREA 495 SQ.FT.  
(46.0 SQ.M.)



1ST FLOOR  
APPROX. FLOOR  
AREA 420 SQ.FT.  
(39.1 SQ.M.)

TOTAL APPROX. FLOOR AREA 915 SQ.FT. (85.0 SQ.M.)

Whilst every attempt has been made to ensure the accuracy of the floor plan contained here, measurements of doors, windows, rooms and any other items are approximate and no responsibility is taken for any error, omission, or mis-statement. This plan is for illustrative purposes only and should be used as such by any prospective purchaser. The services, systems and appliances shown have not been tested and no guarantee as to their operability or efficiency can be given

Made with Metropix ©2016

