

## Romney Street, Salford, M6 6DG



**Offers over £89,000**

**\*\* CALLING ALL INVESTORS \*\*** END TERRACE  
**\*\* TWO BEDROOMS \*\* NO CHAIN \*\*** Barlow White are pleased to bring to the market this two bedroom end terrace in the heart of Salford M6. The property briefly comprises of vestibule entrance leading into the lounge area and kitchen. Upstairs there are two double bedrooms and a family bathroom. The property benefits from Gas Central Heating and Upvc Double Glazing. Externally there is a medium sized garden to the rear. The property is well presented and modern throughout and is ideally situated for a short commute to Manchester City Centre and Salford University. Local amenities are close at hand including shops and bus routes. For more information or to arrange a viewing please call Barlow White on 0161 7880909

**Lounge**  
**12'4 x 11'7 (3.76m x 3.53m)**



Vestibule entrance to lounge with power points, Tv aerial, wall mounted radiator and front aspect window.

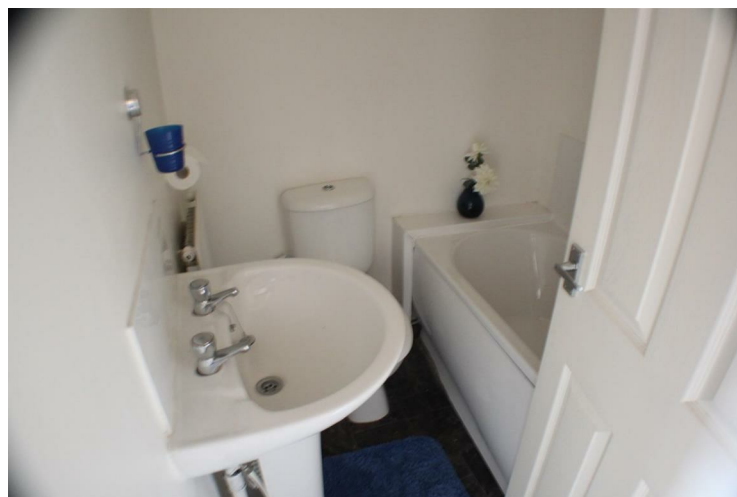
**Kitchen**  
**12'4 x 12'1 (3.76m x 3.68m)**



White floor standing and wall mounted units with a grey work surface and a stainless steel sink

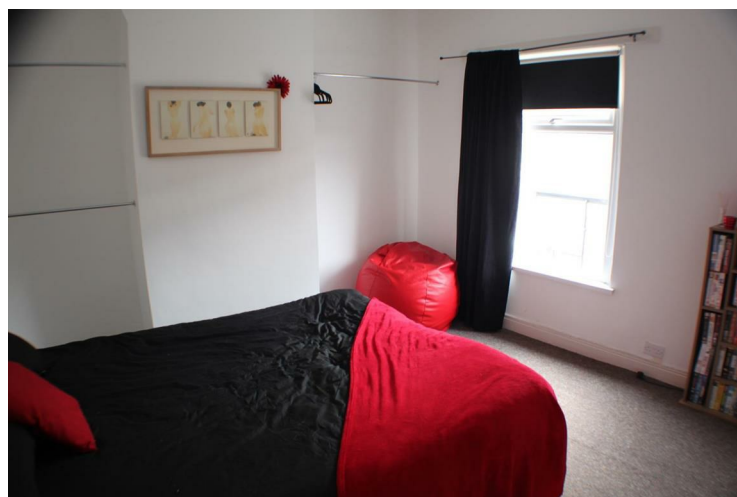
and drainer. With gas hob and electric oven, wall mounted radiator, rear facing external door and window.

**Bathroom**  
**7'1 x 5'5 (2.16m x 1.65m)**



Three piece bathroom suite comprising of bath with shower over, pedestal sink and w/c. Wall mounted radiator and vinyl flooring.

**Bedroom One**  
**13'1 x 12'10 (3.99m x 3.91m)**



A double room with front aspect window, power points and a wall mounted radiator.

**Bedroom Two**  
**12'9 x 6'2 (3.89m x 1.88m)**



A double room with rear aspect window, power points and wall mounted radiator.

