





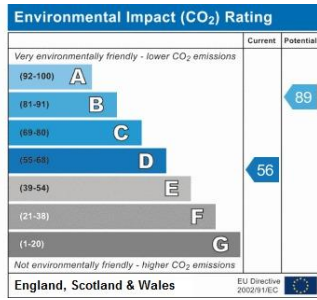
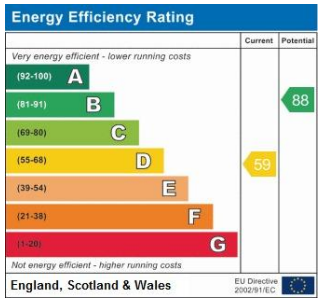
A fabulous two double bedroom end of terrace Victorian Villa in sought after road in central Chislehurst. Including a through lounge/dining room which is open to kitchen and which has a with bay window to front, a conservatory, outside wc and utility room. There are two double bedrooms and family bathroom on the first floor.

The front garden is surrounded by a white picket fence, very pretty. And the rear garden measures approximately 80ft with a really sunny aspect, patio area and then a lawned area with trees and shrubs making it quite private.

Being just 0.2 of a mile from both Chislehurst High Street and Redhill Primary School, amenities are very close and this location is surrounded by shops and good schools. Elmstead Woods station is just 1.4 of a mile away and has a good service into London Bridge and Charing Cross.

Viewing essential.





Please refer to

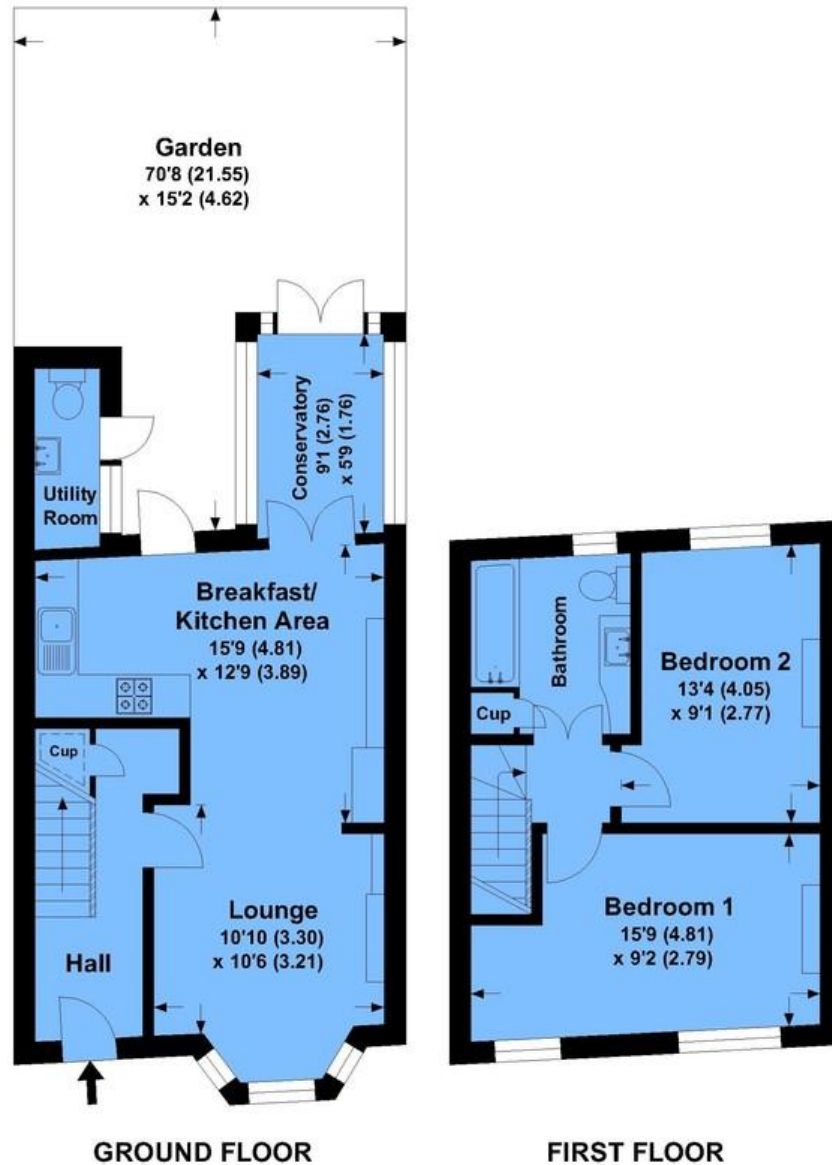
www.jdmestateagents.com

to view our full area guides



Albany Road

APPROX. GROSS INTERNAL FLOOR AREA 812.49 SQFT / 75.48 SQM.



This is for guidance only, not to scale and must not be relied upon as a statement of fact.
Attention is drawn to the notice on these particulars.

