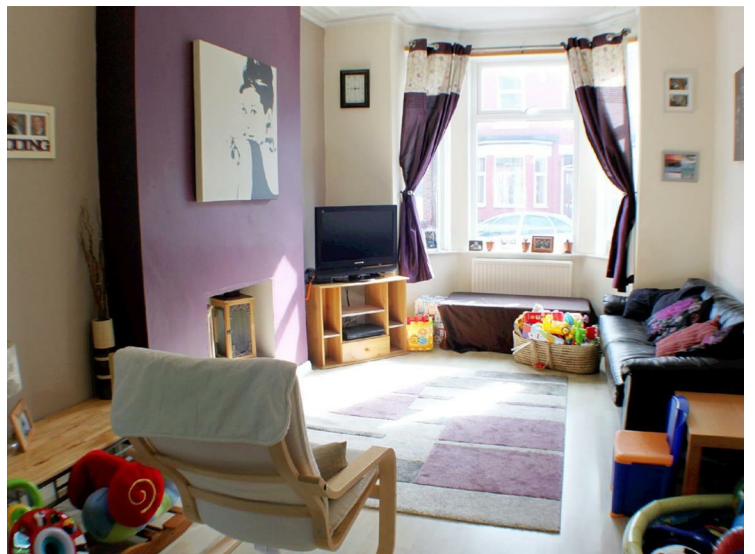


Gleaves Road, Eccles, M30 0FU



£525 Per calendar month

You wont be peeved with Gleaves..in fact you will be quite the opposite as Gleaves Road is an excellent family home. As you approach the house you are met by a bay fronted terrace that stands proudly within the heart of Eccles. This home is sizeable throughout with a nice bright feel, the living room opens through to the second reception room, ideal for dining or creating another living space, there are patio doors which lead you out into the generous rear garden, a wonderful flow through space especially with Spring approaching the light will bounce right through not to mention the usable outdoor space come nicer evenings, the kitchen has all you could need and works every inch of space available. Upstairs the two bedrooms are plentiful with high ceilings for that extra roomy feeling and the family bathroom is modern, partly tiled and of a considerable size. The house alone should make you want to view, but if you are still pondering then let me also tell you how utterly convenient the location is, it has daily needs aplenty, with transport links including the bus, train and the metro all taking you into Salford Quays and Manchester City Centre, not to mention the hoards of high street shops in the town centre along with major supermarkets making popping to the shops a breeze. You even have the mighty Trafford Centre close at hand which offers you entertainment and shopping at its best. So now that we have established this a cracking rental there's only a few more things to say, House...tick, location...tick, price...tick
FEES APPLICABLE PLEASE CONTACT THE OFFICE FOR MORE INFORMATION

Kitchen



Bedrooms



Bathroom



External



Living / Dining Room

