



**THE CORNICHE, 20 ALBERT EMBANKMENT,
£1,160,000**



With over 900 sq ft of accommodation, this fantastic value two bedroom apartment is available for off-plan purchase in the second tower of The Corniche, 20 Albert Embankment, for completion in 2017.

Located in an enviable position on the bank of the River Thames, The Corniche (designed by Foster & Partners) captures some of London's most exquisite views, not only of the Houses of Parliament and the River Thames, but also the Tate Britain, London Eye and the City.

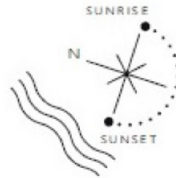
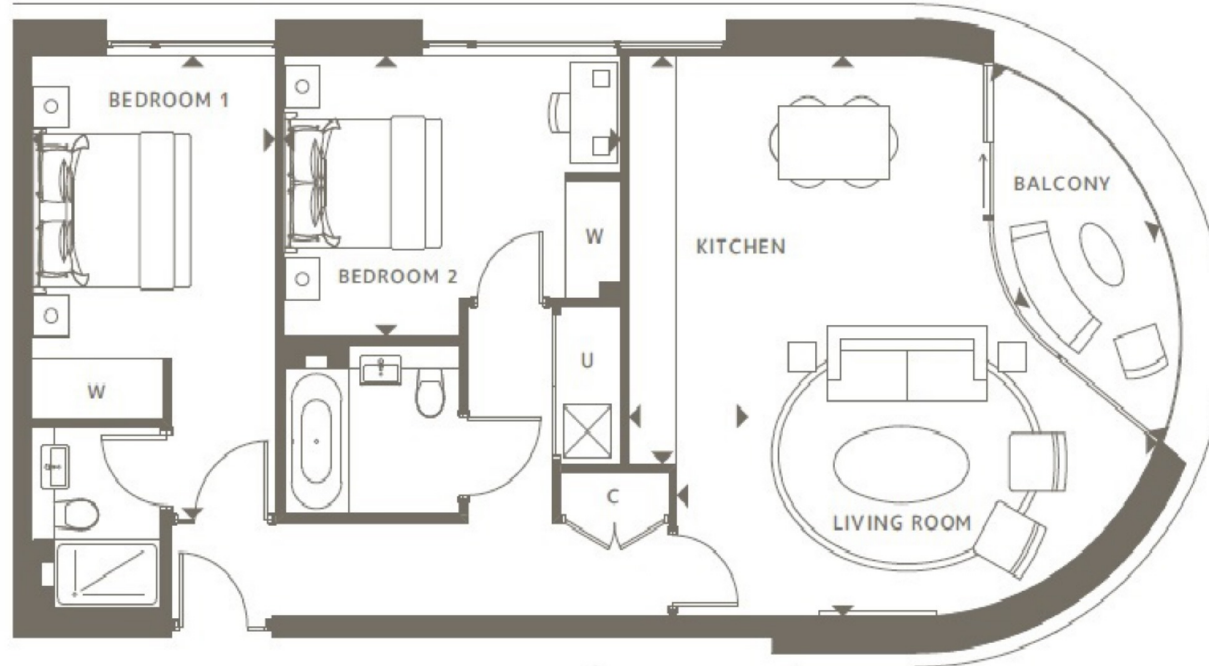
The development includes extensive residents facilities including a restaurant, gym, spa, pool and cinema, and also commercial spaces such as restaurants and cafes focused around a well considered and inviting public space.





THE CORNICHE, 20 ALBERT EMBANKMENT

FOURTH FLOOR



Living Room	6.06 x 6.60m	16'11" x 21'8"
Kitchen	1.50 x 4.80m	4'11" x 15'9"
Bedroom 1	3.06 x 5.45m	10'1" x 17'11"
Bedroom 2	4.26 x 3.31m	14'0" x 10'10"
Balcony	4.84 x 2.01m	15'11" x 6'7"
Total Internal Area	84.32 m²	907.6 ft²
Total External Area	6.24 m²	67.1 ft²

