



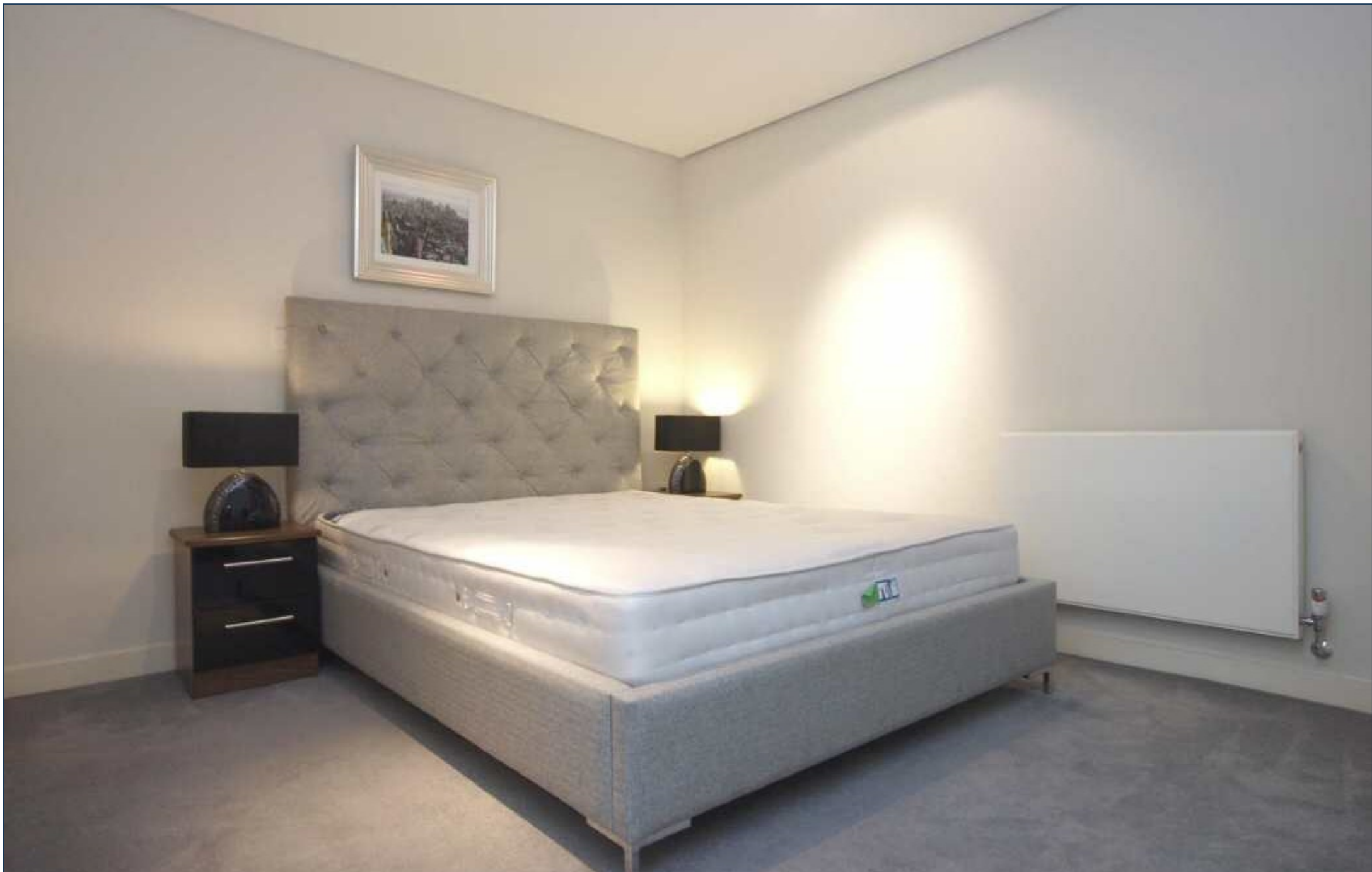
**WATERLINE HOUSE, 4 MERCHANT SQUARE,
£799,950**



A quiet and generous two bedroom apartment of some 775 sq ft (72 sqm) in Waterline House, Merchant Square, available for chain free purchase. With modern fixtures and fittings throughout this apartment comprises an open plan reception room, fully fitted kitchen, an en suite to the master bedroom, a further bedroom and guest bathroom.

Positioned moments from the extensive shops, bars and restaurants of Edgware Road and close to the amenities of Marylebone. Transport links include Paddington Station (Hammersmith and City, Bakerloo, District, Circle lines, British Rail) including the Heathrow Express. The A40 (M) provides fast access in and out of central London and to the West, whilst the green open spaces of Hyde Park are also moments away.





WATERLINE HOUSE, 4 MERCHANT SQUARE
SECOND FLOOR
APPROX GROSS INTERNAL AREA
775 SQ FT / 72 SQM

