



4 RIVERLIGHT QUAY, NINE ELMS

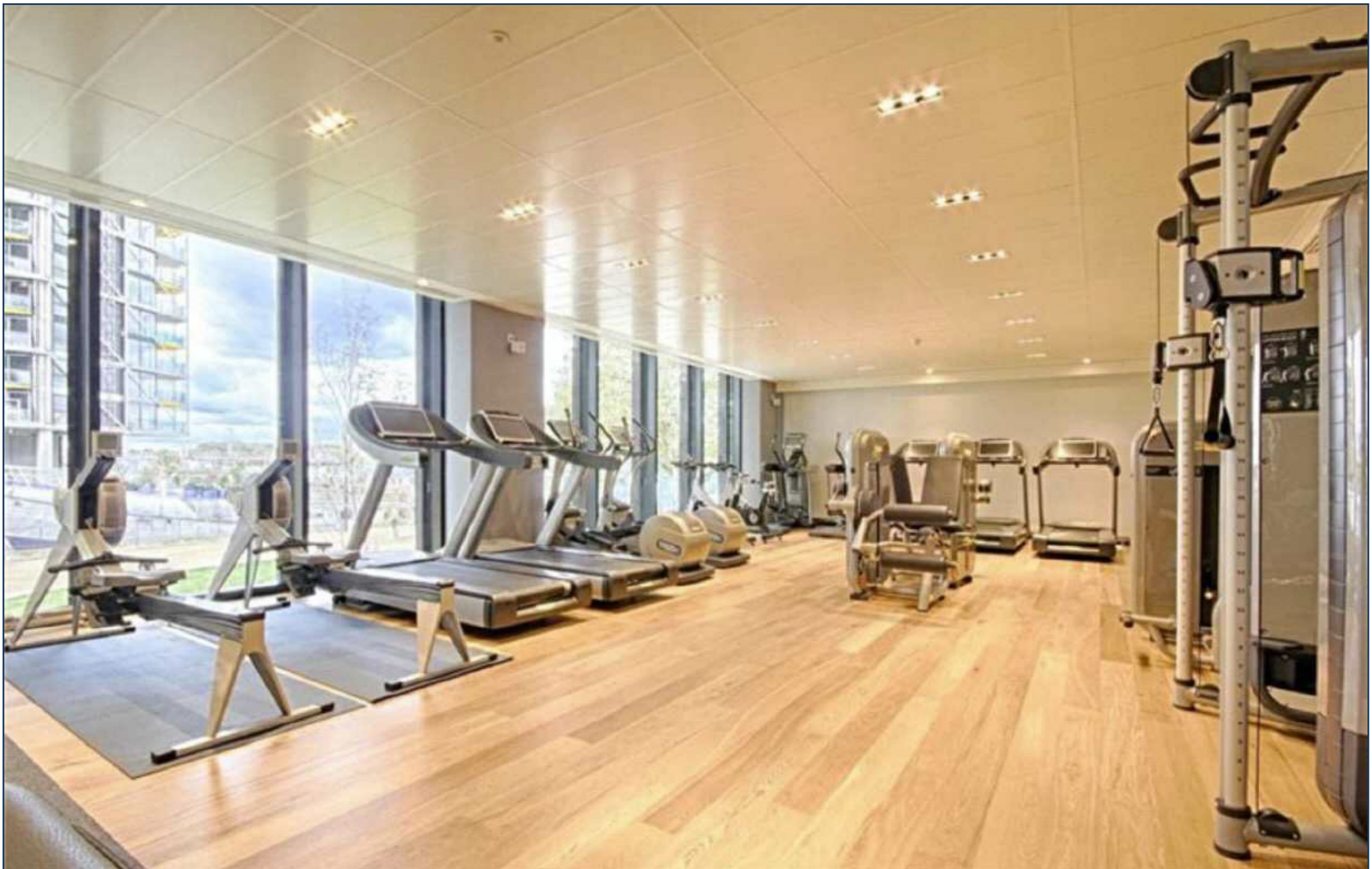
£1,300,000



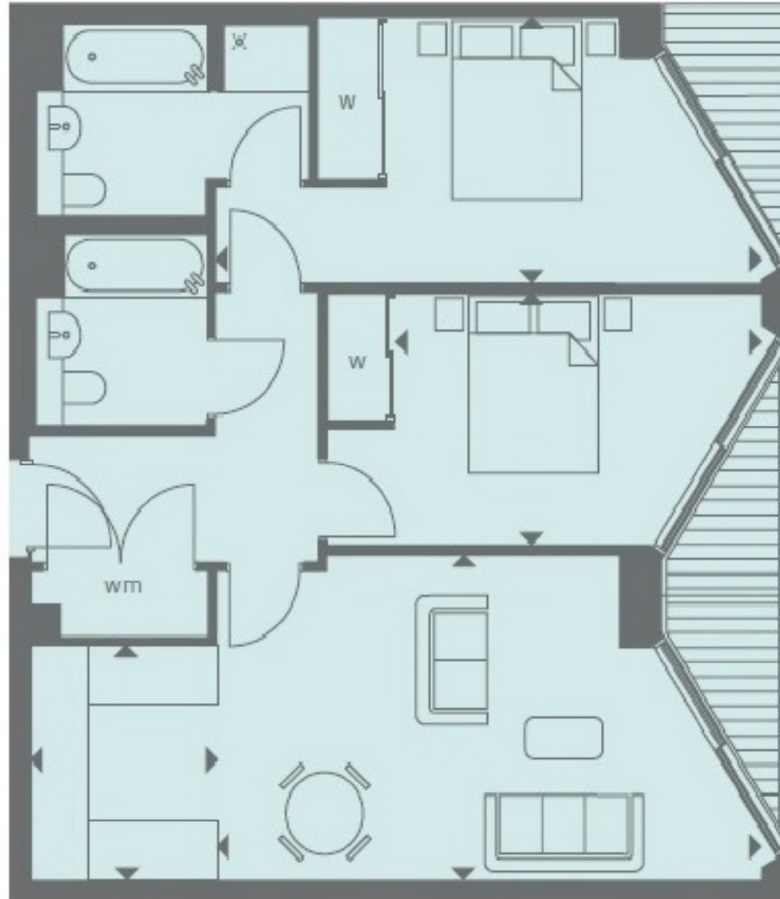
Direct river views with secure parking space - a fifth floor two bedroom apartment only one plot from the water's edge with views to Westminster available as an investment off-plan sale in the Riverlight development for completion in early 2016. This apartment offers 795 sq ft of living space, two balconies and en suite to master, high specification level throughout, comfort cooling and under floor heating.

Created by world-renowned architects Rogers Stirk Harbour & Partners. Riverlight consists of six modern and elegant pavilions that have been specifically designed to maximise the sunlight within and optimise the views out. Over 75% of the development is dedicated to open space with the riverfront visible and accessible between each and every building. It offers a riverside walkway and park, private gardens and water features. An exclusive residents Clubhouse offers a unique third space between home and work which to socialise, exercise and be entertained, from a private screening room to virtual golf facilities; a residents club lounge and library and a 15m swimming pool, state-of-the-art gymnasium and spa.





RIVERLIGHT FOUR FIFTH FLOOR



INTERNAL AREA M ² / SQ FT	73.89 / 794
EXTERNAL AREA M ² / SQ FT	7.26 / 78.1
Living / Dining	6.34m x 3.55m / 20'8" x 11'6"
Kitchen	2.56m x 2.16m / 8'4" x 7'1"
Bedroom 1	6.36m x 2.89m / 20'9" x 9'5"
Bedroom 2	4.26m x 2.75m / 14'0" x 9'0"
Balcony 1	5.28m x 1.49m / 17'3" x 4'9"
Balcony 2	2.64m x 1.49m / 8'7" x 4'9"

