



**AMBASSADOR BUILDING, EMBASSY GARDENS,  
£1,100,000**

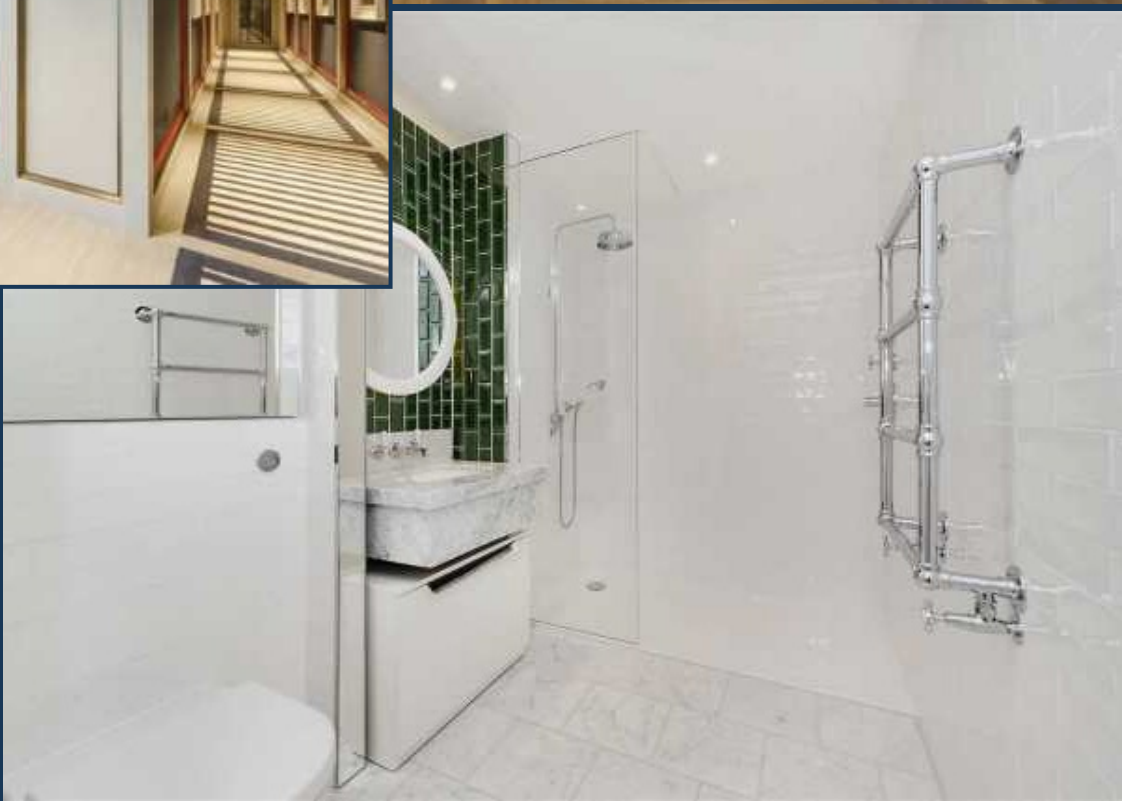


A brand new and beautifully furnished larger style two bedroom apartment of 867 sq ft (80.5 sqm), with secure valet parking, available as a purchase for first time occupation within the beautifully appointed Ambassador Building at Embassy Gardens.

Designed to the highest specification, the apartment boasts high ceilings, walnut parquet flooring, private winter garden, comfort cooling and abundant natural light reminiscent of a Manhattan loft apartment. Located on the banks of the Thames and near London's cultural South bank, residents will not only enjoy a wealth of the Capital's finest attractions and amenities practically on their doorstep but also premium residents facilities including an exclusive private club and health spa, which rivals the best international hotels in the world.



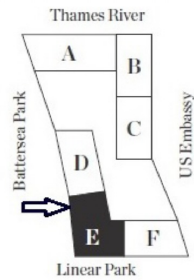








**AMBASSADOR BUILDING, EMBASSY GARDENS SW8  
FOURTH FLOOR**



**Total area:**  
80.5 sqm / 867 sqft  
**Living area:**  
8150 x 3810 mm  
**Bedroom 1:**  
5215 x 3160 mm  
**Bedroom 2:**  
3915 x 2800 mm  
**Winter Garden:**  
12.2 sqm