



PROVIDENCE TOWER, CANARY WHARF

£650,000

A twelfth floor two bedroom two bathroom apartment, with secure parking and wrap-around terrace, available as an off-plan investment purchase for completion in Q4 2015.

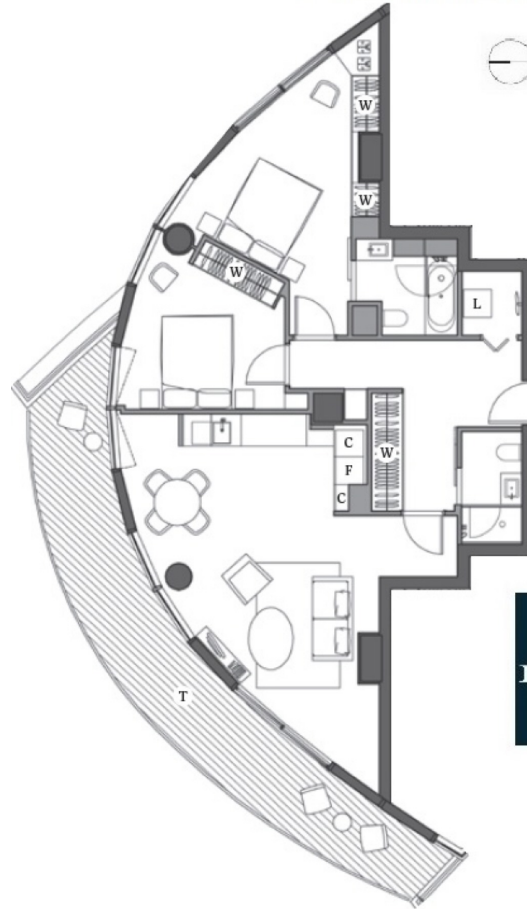
Providence Tower is the final building on the successful New Providence Wharf estate, a high-end residential community located next door to Canary Wharf, the worlds banking centre. Standing at 43 stories tall, the meticulously designed apartments in Providence Tower will have panoramic views across London, as well as outstanding interior finishes. Residents will also enjoy exclusive use of a Sky Lounge and Sky Terrace atop the tower, which will serve as a place for quiet relaxation as well as a hospitality suite for private parties.





PROVIDENCE TOWER, BISCAYNE AVENUE, LONDON E14

TWELFTH FLOOR



Total area
896.9sqft / 83.3sqm
Living / Kitchen
7100 x 5400mm
Bathroom
2430 x 1300mm
Bedroom 1
6090 x 3900mm
Ensuite 1
2185 x 2080mm
Bedroom 2
3635 x 3160mm
Terrace
188.4sqft / 17.5sqm

