

REPRESENTATIVE VIEW

5 RIVERLIGHT QUAY, NINE ELMS

£985,000



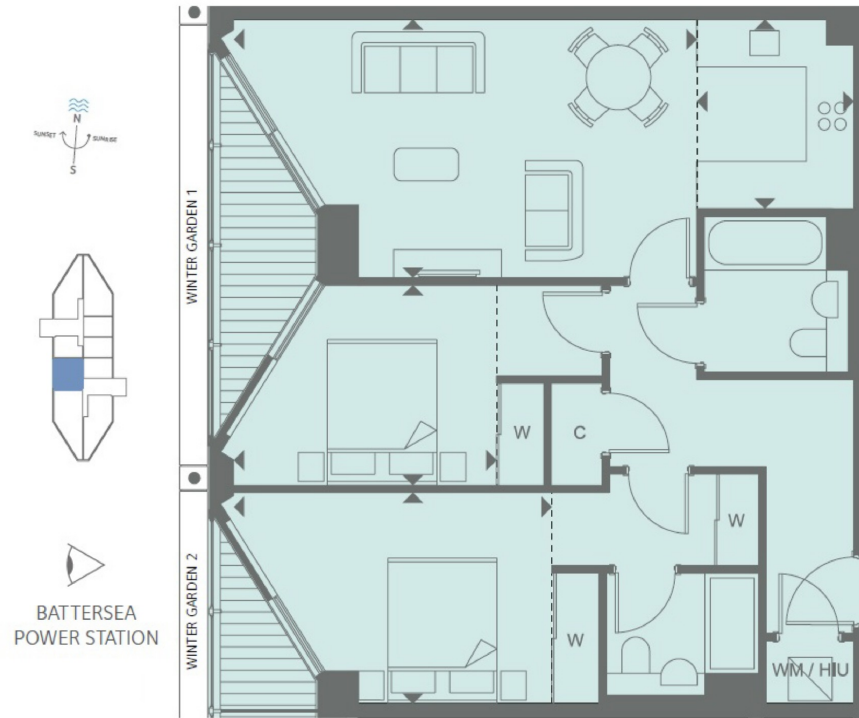
An extremely rare two bedroom apartment with westerly river and Battersea Power Station views, available in the newest phase of Riverlight Quay. This second floor apartment is available as an investment off-plan sale for completion in 2017. This apartment offers 792 sq ft of living space, two winter gardens and en suite to master, high specification level throughout, comfort cooling and under floor heating.

Created by world-renowned architects Rogers Stirk Harbour & Partners. extremely consists of six modern and elegant pavilions that have been specifically designed to maximise the sunlight within and optimise the views out. Over 75% of the development is dedicated to open space with the riverfront visible and accessible between each and every building. It offers a riverside walkway and park, private gardens and water features. An exclusive residents Clubhouse offers a unique third space between home and work which to socialise, exercise and be entertained, from a private screening room to virtual golf facilities; a residents club lounge and library and a 15m swimming pool, state-of-the-art gymnasium and spa.





5 RIVERLIGHT QUAY SECOND FLOOR



INTERNAL AREA M ² / SQ FT	73.6 / 792
EXTERNAL AREA M ² / SQ FT	6.6 / 70
Living / Dining	6.35m x 3.55m / 20'10" x 11'8"
Kitchen	2.60m x 2.15m / 8'6" x 7'1"
Bedroom 1	4.36m x 2.90m / 14'4" x 9'6"
Bedroom 2	3.60m x 2.75m / 11'10" x 9'0"
Winter Garden 1	5.10m x 1.34m / 16'9" x 4'5"
Winter Garden 2	2.50m x 1.34m / 8'2" x 4'5"



PRIME LONDON
SALES LETTINGS ACQUISITIONS ASSET MANAGEMENT
NEW HOMES AND INVESTMENTS