





An ideal opportunity to purchase a spacious split level flat in a prime location close to Chislehurst station.

Accessed via an external staircase this first floor flat features a large reception hall, fitted kitchen/diner and a large lounge with views to the rear.

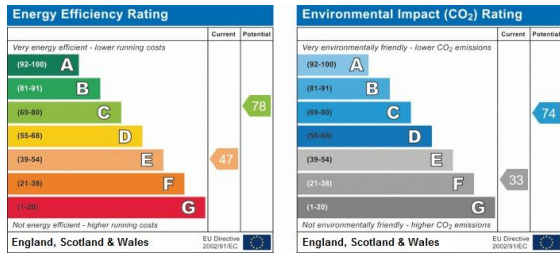
Two double bedrooms and a bathroom on the first floor.

Some refurbishment required.

End of chain.

Lease term 999 years from 1961
Ground rent £15 per annum

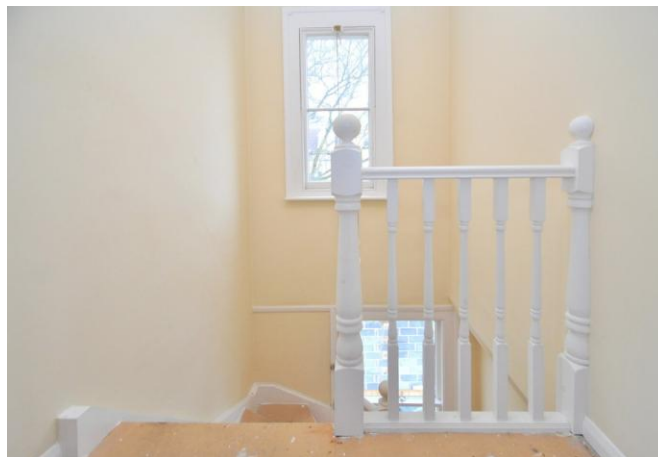




Please refer to

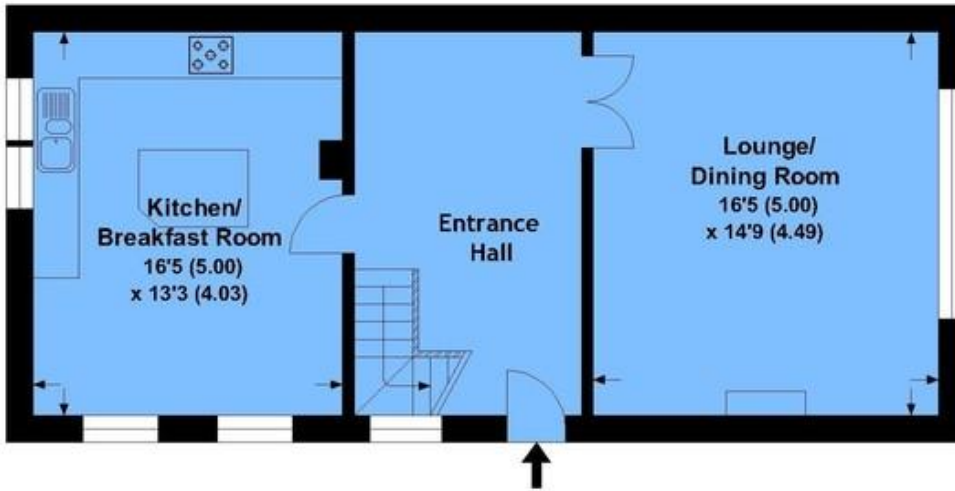
www.jdmestateagents.com

to view our full area guides

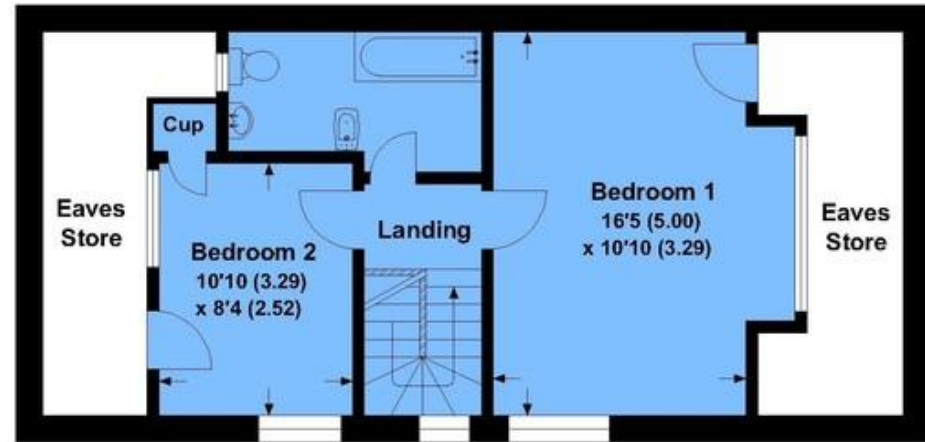


Rodwold

APPROX. GROSS INTERNAL FLOOR AREA 1040.65 SQFT / 96.68 SQM.EX EAVES STORE



FIRST FLOOR



SECOND FLOOR



This is for guidance only, not to scale and must not be relied upon as a statement of fact.
Attention is drawn to the notice on these particulars.

