

## Maranatha Court, Eccles, M30 7QL



**Offers over £75,000**



**NO CHAIN, TWO BEDROOMS, INVESTMENT OPPORTUNITY.** Barlow White are pleased to bring to the market this TWO bedroom TOP FLOOR apartment in Maranatha Court. Within walking distance to the TRAFFORD CENTER and local amenities. The apartment briefly consists of a lounge, fully equipped kitchen, two bedrooms, a family bathroom and private parking. Also with double glazing, electric heating, and a SECURE ENTRY SYSTEM to the development and communal gardens. With good transport links nearby including bus routes, tram and motorway networks. An easy commute to Salford Quays, Media City and Manchester City Center. To arrange a viewing please call Barlow White on 0161 7880909

**Lounge**  
**14'4 x 10'2 (4.37m x 3.10m)**



With power points, Tv aerial, telephone socket, rear facing window and carpeted flooring.

**Kitchen**  
**11'0 x 8'0 (3.35m x 2.44m)**



With wall mounted and floor standing units in beach colour with blue co-ordinating work surfaces with a stainless steel sink and drainer an extractor and a rear facing window. An integral cooker, electric hob vinyl flooring and appliance space for a washer and a fridge/freezer.

**Bathroom**  
**6'2 x 6'1 (1.88m x 1.85m)**



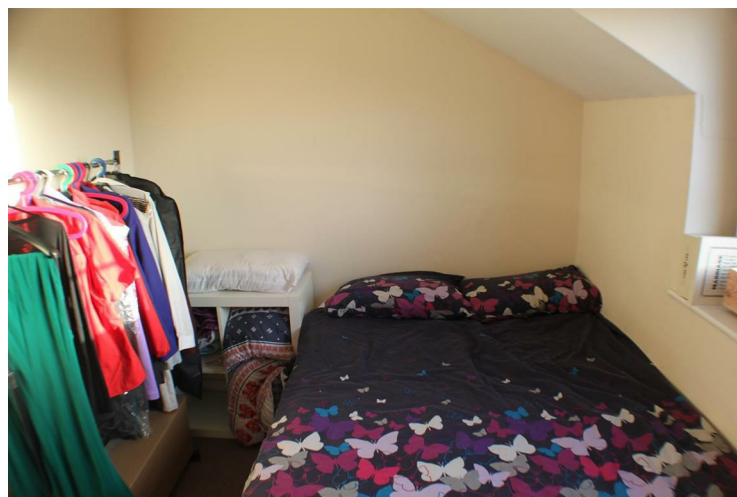
A white three piece bathroom suite with bath, pedestal sink, w/c and electric shower over the bath. Part tiles walls, vinyl flooring and an expelair.

**Bedroom One**  
**10'2 x 7'11 (3.10m x 2.41m)**



Rear facing window, carpeted flooring, power points and electric heater.

**Bedroom Two**  
**9'9 x 7'10 (2.97m x 2.39m)**



Rear facing window, carpeted flooring, power points and electric heater.

