

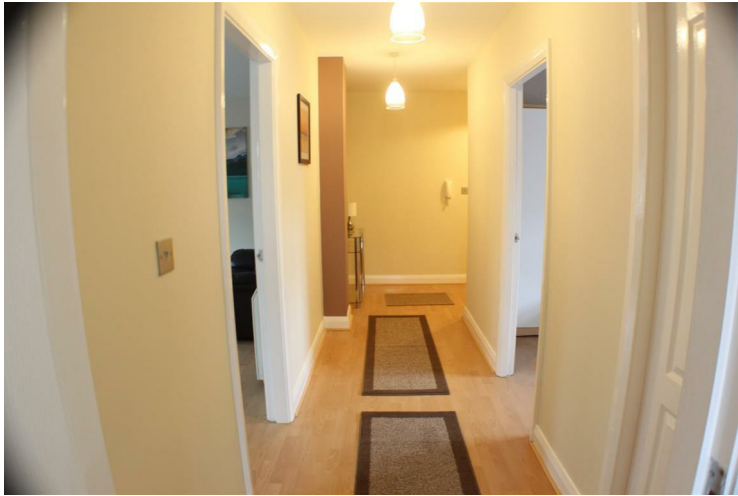
## Church View, 11 Park Street, M27 4UP



**Offers over £85,000**

GREAT INVESTMENT OR 1ST HOME. We are delighted to offer for sale this 1st floor two bedroom apartment in Church View Swinton. The apartment has a large entrance hallway, spacious bay fronted lounge / dining room which is open plan and leads to the modern fitted kitchen with integrated oven and appliances. There is a great sized double bedroom, a smaller second bedroom and a bathroom with white suite. The apartment shares a private entrance with one other apartment only. There is off road private parking included. Furniture and appliances can be included in the sale. Electric heating and double glazing. Please call Barlow White on 01617880909 to arrange viewings or for more information.

### Hallway



### Lounge/Diner

17'5 x 11' (5.31m x 3.35m)



Modern decoration with electric heaters, laminate flooring and a bay window with a front facing aspect.

### Kitchen

8'8 x 7'7 (2.64m x 2.31m)



A neutral fitted kitchen with floor standing and wall mounted units, a co-ordinating black work surface and a stainless steel sink and drainer. With an integral cooker, hob and hood and appliance space for a fridge/freezer and washing machine. The look is completed with fully tiled cream floor with part tiled walls and a front facing window.

### Bathroom

6'10 x 6'10 (2.08m x 2.08m)



A three piece white bathroom suite comprising of a bath, pedestal sink, w/c and an electric shower over the bath. With part tiled walls and lino flooring.

**Bedroom One**  
**11'1 x 9'8 (3.38m x 2.95m)**



A double room with neutral decoration, laminate flooring and a side facing window.

**Bedroom Two**  
**9'7 x 8'2 (2.92m x 2.49m)**



A single bedroom with neutral decoration, laminate flooring and a rear facing window.

